

Kumeu Courier

FREE monthly community magazine for Kumeu & surrounding townships



- Safer communities
- Food & beverage
- Home & garden
- Property market report

Waimauku Kindergarten turns 20

Circulation is 10,000 print copies and 3371 opened and read email copies.

Editorial contributions are free from cost. Advertising starts at \$100 plus gst for a business card size.

Contact Geoff Dobson on 027 757 8251 or geoffdobson2017@gmail.com

November 2023



Greetings

Perhaps local MP Chris Penk will now have the help he needs to get things done in this area.

The blue wash to the election should aid his key objectives to get the Kumeu bypass and State Highway 16 congestion and safety sorted.

Hopefully we'll get more traction on fixing the potholes, slips and cracks in the area too.

It will be interesting to see what gets ditched in this area and what remains on the cards.

National leader Christopher Luxon reckons the economy needs fixing (along with the cost-of-living bite) and other matters.

With 567,000 special votes to be counted by November 3, the Port Waikato byelection on November 25, and a lot more to come I don't think we'll see much action from a new government this side of Christmas.

There's even talk of Chris Luxon's "mini budget" proposal being delayed, possibly until next year.

Before the election, Chris listed eight priorities. These included lowering inflation, growing the economy, letting people keep more of what they earn, building infrastructure, restoring law and order, reducing health waiting times, and ensuring net carbon zero by 2050.

With the global economy nearly in tatters, wars breaking out or threats of them at least, climate change and more – it seems to me like the world is going to hell in a handbasket.

Mortgage interest rates are through the roof, everything is going up in price (including groceries, rates, insurances, and more).

Even the lawnmower gas doesn't go as far as it used too – provided the weather allows lawns to be mowed.

I see many people out here in a similar situation, probably a reason for the backlash against the last government.

I'm just hoping there's enough money still around to fix everything without bankrupting us all or more taxes burying us.

I wish the new government good luck and all the best in sorting things.

Geoff Dobson, Editor



What's inside

- 3** People & Places
- 9** Safer Communities
- 10** Community News
- 12** Reid Organics
- 14** In brief: Updates
- 16** Property News
- 18** Refinancing
- 20** Hot Property
- 22** Property Statistics
- 24** G.J. Gardner
- 26** Property Market
- 28** Home & Garden
- 30** Sculpture Exhibition
- 32** Water Filter
- 34** Central's Tips
- 36** Pets
- 38** Food & Beverage
- 40** Health & Beauty
- 42** Ask Dr Heather
- 44** Area Columnists
- 46** Development plans

ENQUIRIES / FEEDBACK:

Geoff Dobson

P 027 757 8251

E geoffdobson2017@gmail.com

W www.kumeucourier.co.nz

COVER PHOTO: Waimauku Kindergarten

PRINT RUN: 10,000 copies, Treehouse Print

EMAIL DATABASE: Sublime NZ

DISCLAIMER: Articles published are submitted by individual entities and should not be taken as reflecting the editorial views of this magazine or the publishers of The Kumeu Courier Limited. Articles are not to be re-published unless written consent is granted from the publisher (Graham McIntyre).

People & Places

Waimauku Kindergarten celebrates 20 years

Waimauku Kindergarten in Freshfields Road is celebrating 20 years of providing high quality education for families/whanau in the community.

An open day is on Saturday November 4 from 9am to noon for any families interested in looking around the kindergarten environment, with some favourite activities for tamariki to enjoy.

Past tamariki, whanau, committee members, presidents and teachers are welcome at the kindergarten during the birthday week beginning Monday November 13.

Waimauku Kindergarten is the only non-profit, community-based Government Kindergarten in that area, run by the Northern Auckland Free Kindergarten Association, aka Kaitiaki Kindergartens.

The kindergarten building was blessed in October 2003 by local kaumatua Takutai 'Doc' Wikiriwhi and officially opened by Sir John Key on November 15, 2003.



The establishment committee and president Jo Evans worked tirelessly to help raise funds to open the kindergarten with the support of the Northern Auckland Kindergarten Association and the local community.

The first kaiako/teachers were Alison Brierly and Brodie Hirst - the latter still a valued member of the kindergarten's teaching team - opening with 30 tamariki.

Experienced kaiako/teachers are head teacher Shar Caitcheon, Brodie Hirst, Rachel Jackson, Kylie Melville, Melissa Williamson, Nic Sherrock and Jess Booth.

"We are a stable, fully qualified team who work together to provide a caring, nurturing, fun and engaging environment for our Tamariki," says Shar.

"Our kindergarten environment has developed over the last 20 years with lots of the original plantings making for a beautiful, large and nature rich environment for our tamariki to enjoy.

"We have extensive gardens where our tamariki regularly take part in planting, harvesting, eating and sharing our produce," she explains.

"We believe in a sustainable approach as we are the kaitiaki/guardians of our environment."

The kindergarten has close connections with Waimauku School and participate in transition to school visits where kindergarten tamariki are supported through the transition to school journey.

Cross-country season is a kindergarten favourite, supported by past

CHRISTMAS SHOP DECORATION COMPETITION

Get those Christmas decorations out and get creative.
Show us how much your team enjoys Christmas and bring some cheer to the local business area.

Judging will occur on

Saturday, 16 December

\$3,000 in prizes!*

NorthWest
COUNTRY
BUSINESS ASSOCIATION

*Conditions apply



People & Places

tamariki and siblings, many of whom cheer the runners on.

Good Planet Café open

Farm-fresh flavours are offered at Good Planet Café at Riverhead.

Everyone is welcome, including families, couples, friends, gardening and lifestyle groups, local commuters and day trippers, to enjoy the farm and what Good Planet Café has to offer - breakfast, brunch or lunch seven-days a week.



Set in a decorated conservatory with vertical greenery, the café's cosy ambience allows visitors to escape the hustle and bustle, unwind and recharge.

The café transitions to al fresco dining in the warmer weather, surrounded by the sights and sounds of the farm.

The café menu changes with the seasons, ensuring the freshest and most delectable dishes year-round.

Using farm-fresh ingredients means Good Planet Café aims to work with local producers and crafts its dishes using house-made spice blends, dressings, vinaigrettes and sauces.

Popular dishes include the buttermilk pancake stack with seasonal fruits, a delicious berry compote topped with maple and mascarpone, along with Italian-inspired lunchtime favourite prawn linguine with garlic mushroom, house-made basil pesto, cherry tomato and parmesan.

Thirst quenchers include freshly made smoothies, milkshakes and a range of juices, sodas, barista coffee and specialty teas.

A selection of baked goods and to-go delights are offered daily from the counter too.

Visitors can also explore the farm shop adjoining the café, stocked with fresh strawberries, other berries when in season, jams, sauces, honey, gift selections and Good Planet gift hampers. More products and gifts will be added this season.

The Good Planet farm and attractions offer plenty for everyone - it's now one of Auckland's favourite family destinations.

The pick-your-own strawberry farm has now opened for the season. Other berry varieties such as raspberries, blackberries, blueberries and boysenberries come into season from December - just in time for Christmas.

Good Planet's Ice Cream Shop provides real fruit ice cream, sorbets, smoothies, iced coffee and hot drinks.

The Adventure Park with Inflatable Maze, Bungy Trampoline, Zorbing and Mega Slide is now ready for the youngsters.

All Adventure Park fun is open up to seven-days a week from November, including the Inflatable Maze, Bungy Trampoline, Wipeout, Mega Slide, Stunt Jump, Zipline and Zorbing (weather permitting).

The Splash Park with its splash, slide and water provides fun all summer long from early December.

Children's outdoor birthday parties can be booked with Adventure Park or Splash Park activities, including the farm's berry-fun experiences for kids.

Work functions, team days and Christmas parties are also catered for.

Special events on the farm throughout the season include event days for children with the farm's berry characters, crafting, food experiences and more.

Stay tuned for farm events via the what's on calendar on Good Planet's website.

Education experiences are offered too, working in partnership with school holiday programme providers and pre-school and primary schools for prior arranged learning and adventure experiences. Visit the website for more details.

Good Planet is dedicated to sustainable and eco-friendly practices, and invites people to join in making a positive impact on the environment.

"We grow and operate with a core focus on offering our consumers premium quality strawberries and other berries while protecting the environment," Good Planet says.

"Our land is so important to us. Our company is fully committed to making sustainable improvements across all its products."

"We use 100% recyclable plastic packaging, and reduce food waste by converting any excess fruit into artisan jams and sauces."

Follow Good Planet on social media to stay up-to-date with latest offerings, special promotions, and other happenings on the berry farm.

Search Facebook and Instagram: @Goodplanetnz, visit www.goodplanet.co.nz or email info@goodplanet.co.nz for information.

No bookings required for the café, open seven days from 9am-5pm. Visit www.goodplanet.co.nz/cafe for the menu.

Farm hours from November are 9am-5pm seven days, Adventure Park 10am-5pm, all including public holidays (Closed only Christmas



Custom built homes
to suit your lifestyle.

Visit Our Display Home
6 Kaipara Flats Rd, Warkworth
10:30am to 2:30pm Mon - Fri

0800 FAST BUILD - WWW.ADVANCEBUILD.CO.NZ



People & Places

Day).

Birthday parties for children visit www.goodplanet.co.nz/birthdays for online bookings.

Kumeu Rotary Christmas parade to be 'best yet'

Preparations are well underway for the return of the Kumeu Rotary Christmas parade on December 1 from 6pm.

"This parade promises to be the best yet" says Justine Smith, who is one of a group of locals organising the parade.

"It's been really rewarding visiting local businesses to get their support," she adds.

"There is so much excitement and positivity about having the parade back on the main street again and we have a record number of floats entered."

Parade organisers are grateful to Kumeu Rotary, Traffix Ltd and the Northwest Business Association which are the principal sponsors for the 2023 parade.

The parade begins at Tapu Rd, Huapai and travels south, down the main street to turn right into Access Road, ending at the Kumeu showgrounds.

The community can view the parade from both sides of the main street (SH16) and the road will close from 6pm on Friday December 1.

"It's a challenging time to be running a parade with all the construction and roadworks happening," says Justine.

"But we feel confident that we can still safely hold the parade without huge disruption to traffic and it was really important to us that we did not have to postpone the parade for another year."

Public parking is available at the Kumeu Showgrounds.

Information about the parade, route and traffic management updates will be posted on the Kumeu Christmas Parade Facebook page and Instagram account and shared on local community Facebook pages.

Organisers say local businesses and homeowners whose access will be affected for the duration of the parade will be notified by



mailbox drop.

'Susan's Scrappers' at Kumeu

A group of craft enthusiasts known as "Susan's Scrappers" gathers every second Saturday of the month at the Kumeu Community Hall to pursue a passion for scrapbooking and cardmaking from 10am to 4pm.

"We're a welcoming and inclusive space for anyone to indulge in their creative pursuits and connect with like-minded crafters," says Susan Shearer who runs the day, adding Susan's Scrappers is open to anyone who enjoys creating memories.

The hall buzzes with enthusiasm as participants, young and old, experienced and novice, get together, she explains.

The scrappers bring their photos, memorabilia, and supplies to create beautiful and meaningful keepsakes.

"Photos are not meant to be left on a phone, they are meant to be shared and a permanent memory for generations to come," says Susan.

"We all enjoy the fun of craftwork and conversation, and lots of laughter. Everyone is open to sharing their knowledge and opinions - it is how we learn - along with a structured class each afternoon to learn something new."

Stop by the Kumeu Community Hall and you might find yourself joining in the fun with Susan's Scrappers, where memories are preserved, friendships are forged, and happiness is in ample supply.



Waimauku Kindergarten is turning 20 years old!



We are holding a birthday week Monday 13th to Friday 17th November.

We would love to see all past students, parents, whanau, and committee members.

All welcome!

18 Freshfields Road, Waimauku

Geoff Dobson
MEDIA

P 027 757 8251

E geoffdobson2017@gmail.com



People & Places

Anyone keen to try scrapbooking can bring a few printed photos and get started.

Close to My Heart products are available to purchase.

The next Susan's Scrappers session is on Saturday November 11, while a Christmas extravaganza is on Saturday December 9.

The cost is \$30 normally if paid on or before the Monday prior.

The Christmas event will have a lunch-included surcharge.

Contact Susan at susan@supacrash.com for more information.

Planting on erodible hillsides

The Kaipara Moana Remediation (KMR) programme to aid Kaipara Harbour restoration is now partnering with landowners to reduce erosion by planting native species on hillsides.

During the first 18 months of operation, KMR co-funding has largely focused on fencing and planting projects near waterways, with the project expanding to further help the environment.

KMR Pou Tataki Justine Daw says an increasing focus throughout winter and spring has been tackling erosion by planting natives on erodible hillsides, which complements ongoing work to protect waterways through fencing and planting.

"Steep land with bare dirt or signs of active movement and erosion is being prioritised for treatment - particularly if water flowing over this land will drain directly into a waterway or the Kaipara Moana itself," says Justine.

This can include land affected by the 2023 floods, storms and Cyclone Gabrielle.

"On flatter land, the minimum KMR project size for planting is 0.25ha, and in the hill country, we are seeking projects involving larger than 1ha of highly erodible land."

The first deadline for co-funding of native planting or regeneration projects is on Monday November 13, and Justine is encouraging landowners to lodge their interest with urgency.

"The team at KMR wants to hear from landowners wanting to establish or regenerate native plants on erodible hill slopes or along waterways," she says.

"We also want landowners to make expressions of interest by



November 13 if they are interested in planting exotic trees on eroding hillsides, such as eucalyptus or redwoods.

"Those who want to plant poplars on eroding hillsides are also invited to express interest before March 31, 2024, to plant in winter 2024. This is part of our ongoing support for landowners across the catchment, including those affected by Cyclone Gabrielle and other adverse weather events," Justine explains.

"It is important to us that landowners throughout the Kaipara Moana catchment understand the sediment reduction options that KMR can co-fund and can access the support they need to reduce erosion, in a way that fits their aspirations.

"This may require a farm system perspective, forestry best practice, or simply having easy access to funding."

Locals feature in finals

Hamish Jeffries of Kumeu was second in the Young Plumber of the Year Northern Regional final.

He is now in the running to be a wildcard entry in the national final in Hamilton on Wednesday November 15.



Hamish works, fittingly enough, for Jeffries Plumbing which includes three Jeffries as directors.

The northern regional final winner is Whangarei-based Blake Patrick from Limitless Plumbing and Gas Limited who automatically qualifies for the national final.

Meanwhile, outboard motor specialist GT Marine of Kumeu has won the Excellence in Customer Service Delivery category at the 2degrees Auckland Business Awards.

Congratulating GT Marine on its success, the Auckland Business Chamber (which includes Chief Executive Officer Simon Bridges) says GT Marine's "dedication to your customers and your industry expertise have truly set you apart as a leader in your field".

"Like many local businesses we were affected by the Auckland flood and cyclone at the start of the year," says GT Marine co-owner George Arona, pictured with co-owner Georgina Arona and award sponsor Barfoot and Thompson managing director Peter Thompson.

"After a big clean up job and two insurance claims we were able to get back on our feet and build momentum again," says George.

"This award is very much a silver lining to what has otherwise been our toughest year in business. It was a huge honour to win, especially

KUMEU TYRES LTD Main Road, Kumeu

- New Tyres
- Truck Retreads
- Used tyres
- Wheel Alignments
- Great Service
- Trusted Advice

Phone Neil 09 412 9856



MURIWAI
GOLF LINKS

Andrew Jackson
General Manager

Mobile: 021 2253907 Ph: 09 4118454
muriwai.manager@golf.co.nz www.muriwaigolfclub.co.nz
P O Box 45 Waimauku 0842, Auckland, New Zealand

People & Places

with the calibre of finalists."

George says the award is also a reflection of the love and passion for what they do and testament to the fact that good old-fashioned values of honesty, care and support and community focus still matter.

"We strive to create a great experience and at the end of the day we just want our customers to get the most out of their boat, so they enjoy their time on the water to the fullest.

GT Marine's mission is to help Kiwis enjoy better boating.

"We're a one-stop-shop with expertise in outboard servicing, repairs, marine electronics installation, trailer repairs and warrants of fitness and Honda Outboard fit ups," George explains.

"Plus, we supply a range of boating gear and outboard parts."

About 43 finalists attended the awards ceremony, with seven finalists in the Excellence in Customer Service Delivery section.

Visit www.aucklandbusinessawards.co.nz for more on the awards.

Northwest gets new bus services

This area has new and improved bus services from Sunday November 12.

Auckland Transport (AT) says more 122 and 125 services will be available while a new 123 bus will serve the Huapai Triangle, giving more buses between Huapai and Westgate.



All bus trips to Auckland City centre transfer at the Northwest Centre while the 1125X service will no longer run.

Bus services between Helensville, Waimauku, Huapai and Kumeu are detailed in a new booklet about "connecting the west to the rest" which includes Westgate, West Hills, Whenuapai, Waitakere Township and most other parts of West Auckland.

Drop-in sessions to discuss the bus service changes are being held and include a session at Te Manawa (Westgate Library) on Sunday November 5, 11.30am-2.30pm.

AT says the changes are being made because the West and Northwest are currently not well served by public transport.

It adds that effective public transport can reduce congestion, emissions, and car parking while improving mobility and health

**WATER TANK
CLEANING &
REPAIRS
& Solid Plastering**
Call **027 410 8404**

outcomes.

From November 5 people can use AT's Journey Planner (at.govt.nz/journeyplanner) or AT Mobile app to plan their travel.

Search West Bus, phone 09 366 6400, or follow AT on Facebook for more information.

Muriwai Beach vehicle ban for Guy Fawkes and peak summer

Fire risks, shorebird, seal and habitat protection are among key reasons the Auckland Council will ban motorised vehicles using Muriwai Beach/Te Oneone Rangatira on November 2-6 (during Guy Fawkes fireworks sales) and December 29 this year to January 15, 2024.



The council says it has made a commitment to manage the impact from vehicles on significant ecosystems bordering Muriwai Regional Park with ongoing summer restrictions.

The council's Planning, Environment and Parks Committee has approved vehicle ban measures during high-risk and peak summer periods for the next three years, including Guy Fawkes.

Planning, Environment and Parks Committee Deputy Chair Angela Dalton says the decision provides a consistent approach to address ongoing safety concerns at Muriwai Beach and continue its efforts to protect ecology in the regional park.

"This reaffirms that we are serious about looking after Muriwai Beach," she explains.

"Many residents in the area have been through significant hardship this year and we acknowledge the community is still in recovery.

"Every summer, vehicles on Muriwai Beach create safety issues and concern around driver behaviour.

Tile Wright®

- Bathrooms
- Kitchens
- Splash Backs
- Waterproofing

Josh Wright
027 260 8225
Tilewright@outlook.com

People & Places

"We need to ensure a responsible pathway is chosen to manage this risk and address some of the long-term damage associated with driving on the beach," Angela says.

"Closing the beach to vehicles for short periods is a great compromise, given that many people would like us to go much further with restrictions."

Muriwai Beach will also be closed to vehicles from December 31, 2024, to January 13, 2025, and December 31, 2025, to January 12, 2026.

The beach's reopening to vehicles after the peak summer bans are subject to a fire risk assessment by Fire and Emergency New Zealand.

Physical barriers will be installed to manage the closures and signs will go up prior to the restrictions.

Auckland Council's Regional Parks Principal Specialist Stephen Bell says a high volume of vehicles have been reported on the beach after the Coast Road access point reopened on September 4 this year.

Stephen says the beach and its surrounding environment has begun recovering since then with dunes revegetating and protected seals, little penguins and other shorebirds returning.

"Now that everyone has access again, we're keen to see that the ecological gains made are not jeopardised by non-permitted activities in the area," he adds.

"Under the current bylaw, moto-x /trail bikes, quad bikes and any other off-road vehicles without a current warrant of fitness or registration cannot be driven on the beach," Stephen explains.

"Unpermitted vehicle activity is having a major impact on some of our most threatened species and damaging the sand dunes.

"We've already had reports of serious harm caused to wildlife in the area," says Stephen.

"People need to understand how fragile this environment is and to be aware of how they impact on their surroundings, especially other visitors, shorebirds and animals on the beach.

"Camping in the dunes is not permitted and fires present a significant risk to the environment and adjacent forest."

Fire and Emergency supports restrictions, given the heightened fire risk during summer to 12,500 hectares of pine forest that runs alongside isolated stretches of the beach.

Rodney Local Board Chair Brent Bailey says Muriwai Beach provides an opportunity for everyone to work together to ensure a better outcome.

"A wide range of recreational users are brought together on the beach every summer - from dog walkers to families picnicking,

surfers, fishers and 4WD vehicle users.

"It's important to ensure we are proactively managing risks so everyone knows what to expect and can plan ahead to make the most of their visit," says Brent.

"I hope these new measures will raise awareness and make this beach being a safer, more protected environment we can all continue to enjoy."

The committee's three-year management approach follows a range of precautions the council has taken for the past three summers to limit vehicle activity on the beach during peak times, including seasonal closures for vehicles, signs, barriers, education and a permit system.

Further measures considered for the future include additional vehicle restrictions and charging for permits.

The council and Auckland Transport are also reviewing traffic-related bylaws and may consider fines for unpermitted vehicles on beaches.

The council's regional parks team has worked closely with iwi and a community advisory group to gather feedback on vehicle management and driver behaviour at Muriwai leading up to the recent decision.

Throughout summer, Auckland Council will monitor the impact of vehicles on Muriwai Beach, along with other agencies including Police, Auckland Transport, and Fire and Emergency.

'Blue Honey' music show

Blue Honey, a four-piece band hailing from Auckland's west coast, has a show at the Kumeu Arts Centre on Sunday November 12. Billed as a "family-friendly" event, the show includes Blue Honey's extended play (EP) debut album 'Spaces Between' and a selection of covers. The EP combines jazz infused chords with soul pop undertones and psychedelic inspired lyrics, the group says. Blue Honey will perform the EP and covers at the centre, with support from Renee Cosio. Growing up in the area, the band formed after an impromptu jam at Kumeu Live in 2020. Band members have been writing their own music and performing on the local music scene ever since. The event is BYO with tickets from www.undertheradar.co.nz/ticket/21760/Blue-Honey-EP-Release.utr. Door sales will be available.



Custom kitchens & furniture

Paul Marley
021 111 9637



- When quality and service matter
- We design, manufacture & install
- Over 30 years craftsmanship experience

www.naturaltimbercreations.co.nz

QUALITY WATER



SUPPLIES

7 DAYS
PHONE NOW!

Bev & Andrew
Speedy

Registered by Ministry of Health & Auckland Council
 Fresh Water Supplies

Ph. 411.8116

Txt 027.345.3805

Safer Communities



One of the incidents Fire and Emergency are regularly called to is motor vehicle crashes.

Incidents like these we attend pose many elements of risk for us as responders including potential fires, biological hazards, broken glass, and sharp debris all while potentially offering critical care to those involved.

One of the most dangerous objects for us attending these is emergencies are other motorists.

Many individuals are so distracted by the scene itself that they are oblivious to the

cones and our team wearing hi-viz trying to control the flow of traffic.

The management of traffic during these incidents is critical to our own safety and allows us to safely undertake what we need to do to render the appropriate care and allow us to clear vehicles and eventually reopen the lanes.

When approaching the incident be aware of how we are controlling vehicles around the incident and pass slowly when prompted to proceed.

Don't be surprised if we get you to come to a complete stop before getting you to slowly drive past at 20kmph or less. This is to ensure those providing critical care are safe and can focus on providing critical care.

DO NOT think this is a good opportunity to get your phone out and record what is going on. Other than breaking the law, you are putting the lives of us at risk and at huge risk of causing a secondary incident.

Keep in mind that these scenes are the

loved ones of others and identifying a family member in an incident via a social media post is completely inappropriate and disrespectful.

Please be considerate and consider the safety of us while we support our community.



Jamie Shaw

Deputy Chief Fire Officer
Waitakere Volunteer Fire Brigade
Phone 09 810 9251

New eLearning module available now

Young children developing water competence

dpanz.org.nz/e-learning

FREE

- ✓ Understand what to do to keep your under-fives safe when near water
- ✓ Get ideas on ways to have fun with your young child in and around water
- ✓ Know how to build your young child's water competence

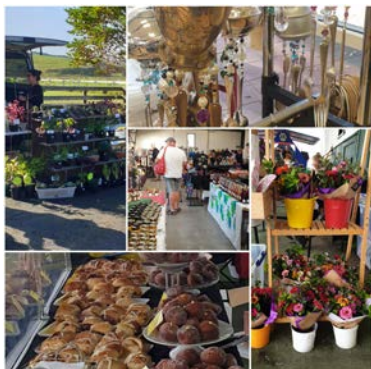
Drowning
Prevention
Auckland

Community News

The Village Market Helensville Showgrounds

Sunday 26th November
8.30am to 1pm

New venue, same great market with all your favourite stalls – locally made crafts, art and gifts, fresh locally grown fruit & veg, preserves, plants, pet products and much more. Delicious food from the market cafe, coffee, sausage sizzle and ice cream. Plus there's live music from Jessica on the piano and free face painting – look forward to seeing you there.



No dogs please with the exception of assistance dogs. Gold coin donation for parking – proceeds to the Helensville/Kaukapakapa scouts jamboree fund raiser.

For more information contact sarah@riversidecrafts.co.nz.

Kumeu Kids Christmas Market event

If you're looking for a great Christmas present or just a little something for yourself, come along to the Kumeu Kids Christmas Market showcasing the talent of the kids in our local community. There will be around 40 stalls with headbands, candles, scrunchies, tote bags, baking, plants, cotton candy, drinks and more for sale all

made by kids. The event is being organised by 12 year old Elisabetta Tamburini from Taupaki, Miss Tamburini says "My goal is to raise money for charity while helping fellow kids learn some business skills and earn money for themselves while having fun doing it". Entry to the market is free, however you can give a gold coin donation to child's cancer. Thanks to the Kumeu Lions Club for supporting with sponsorship. Come and support the local entrepreneurial kids in our community. Cash only Market.

10am - 3pm, Sunday 26th November at the Kumeu Community Centre.

November at Kumeu Arts

Each November we hold our biggest exhibition of the year, The Kumeu Arts Awards. We'll have a huge range of amazing artworks on display, highlighting artists from all over NZ. The event ties in with local businesses who kindly donate prizes. Pop in to see who's won the prizes and



choose your favourite in the 'People's Choice Award'. We're thrilled to be a part of the Muriwai Arts Trail again, which is a great time to visit us on route to the other studios and locations involved on Saturday 25th, and Sunday 26th. Also, this month we've got a Makers Market for you on Friday the 17th between 4-7 pm. Come along to buy art and crafts directly from our 'Makers'. It's a great opportunity to shop early for unique, hand-made, ethical presents for Christmas while supporting local artists. Find information about all this on our website www.kumeuarts.org

North West Country

The time is nigh and we are celebrating our best and brightest businesses in the North West. On Tuesday November 7th we hold our gala dinner and event at Allely Estate where the winners of the North West Country Business Awards 2023 will be announced.



We have Alison Mau as our MC for the night, a most talented speaker and sure to be a highlight. Peter and Catherine Cook from Allely Estate are passionate about celebrating local and have placed local beer, wine and food on the menu. Additionally, the couple offer an opportunity for ticket holders to purchase wine or French bubbles

www.dryup.co.nz

- Ceiling mounted pulley operated cloths
- All aluminium and stainless steel construction
- Ideal for the Garage, spare room, verandra or laundry

Contact Glen 021 117 2954
Glenruohonen@icloud.com
www.dryup.co.nz



Community News

with your label making these ideal Christmas gifts. Any orders made before the night will be available for collection at the event. For further information and to get your business logo on some unique gifts head to www.wintime.co.nz. Tickets to the event are on sale now and we want to see the whole community turn out to celebrate these amazing people so head to our website events page to book your seats.

To celebrate the year we will also be hosting a Christmas drinks business networking event at The Portage Bar, Riverhead on Tuesday December 5th from 5pm. Come along and have a drink and some nibbles while mingling with fellow business owners.

If anyone wants to get into the Christmas mood we will be running a store/ office decoration competition where businesses will have a chance to win a cash prize pack. Keep an eye out in our regular newsletter for more information.

In the new year we will host our first Ultimate Day Out Competition. Customers will be encouraged to shop local and submit their receipts to our website. Three lucky winners will win an Ultimate Day Out, be it Wine Country, Artisan Country or Adventure Country days out. We are calling for interested businesses who would like to be showcased for one of the prize packs to contact Danielle Hancock now, at manager@northwestcountry.co.nz.

Mitre10 Mega Safer Plates

Neighbourhood Support in partnership with the NZ Police and Community Patrol will be holding a special Saturday Safer Plates on Saturday 4th November from 9.00am until 12 noon, hosted by Mitre10 Mega Westgate. You will find us located at the Trade end of Mitre10 Mega closest to Costco Fuel.



The first 50 Mitre10 customers that morning will not only receive a Free Safer Plates change out but will go into the draw to win a Car Care Kit from Mitre10 Mega Westgate. Non-shoppers can still have their number plates screws changed out to tamper resistant screws for the small cost of \$4. Or if you are a Gold Card holder there is no charge. It will only be five minutes out of your day for some peace of mind.

With over 1,200 number plates stolen over the last 12 months in West Auckland alone, \$4 is a very small investment. Replacing your stolen number plates will cost you a minimum of \$38 plus the inconvenience of having to change your insurance details, toll road accounts, pay by plates accounts etc. The Safer Plates programme is supported by the West City Auto Group.






wallerprojects

MARK WALLER
M: 021 802 845
E: mark@wallerprojects.co.nz
A: The Hangar, Catalina Bay,
2/2 Boundary Road, Hobsonville Point
W: wallerprojects.co.nz

AWARD WINNING DESIGN & BUILD




There will be a sausage sizzle also along with some fun activities for the kids.

Please bring cash on the day as we don't have EFTPOS facilities.

Neighbourhood Support, NZ Police and Community Patrol working together to make West Auckland a safer place to live, work and play.

To learn more about to good work West Harbour Community Patrol & Neighbourhood Support Waitakere do in your community visit their web sites

cpnzwestharbour.org.nz
nznswaitakere.org.nz.

New Kumeu Hospice Op Shop

A new Kumeu shop is joining the "Best Op Shops in the West" as Hospice West Auckland's 7th shop. Located in the heart of Kumeu at 46 Main Road and targeted to be open late November, the shop will have great parking and easy access for donation drop offs. In fact, the convenient 'drive up and drop off' donation area will make donating your preloved goods as quick and easy as possible.



For shoppers, you'll discover all of your regular favourites, from clothing, bric-a-brac, toys, books and antiques to vintage items and furniture. And because our retail stock always turns over quickly there will constantly be new treasures to discover at a fraction of their original cost.

Kumeu based Heart Saver NZ Limited - celebrating success

We were absolutely thrilled to be named a finalist in this year's 2degrees Auckland Business Awards in the Excellence in Strategy & Planning category.

Our mission at Heart Saver is to help save the lives of New Zealanders by having affordable and quality health & safety solutions accessible to businesses, community groups and individuals. We're grateful to be in this space where we can make a difference in increasing survival rates of cardiac arrest, as well as educating more Kiwis on this topic.

Currently, we support over 10,000 clients nationally with AED





SERVICE CENTRE

EOIN STUART
Phone 09 412 5900 | Mob 022 639 0274
338 Main Road Huapai - Kumeu, Auckland 0810
autoworxnz@outlook.com

Community News

supply, AED performance verification testing, H&S safety products (including first aid kits) and first aid training across the country and we are thrilled to see this number increasing every year.

We couldn't have got to where we are now without our wonderful team who share this same vision. The Gala Awards Dinner last Thursday at the Cordis in Auckland was an excellent opportunity for the team to be recognised for all their hard work and to see the positive impact our products and services are having on our customers.

Also, thank you to the panel of judges and sponsors of the event - 2degrees, Langham Hospitality Group, Auckland Business Chamber and the category sponsor Fusion5.

Congratulations to the other category finalists, and the category winner Done Right Builders.

Indeed, it was a memorable evening connecting and celebrating with other incredible businesses in Auckland.

Reid Organics

We are a local family from Waimauku, Jordan, Nicole and our 2½ year old son Max. We are a family owned and run company producing skincare products handmade by us with organic and wild harvested ingredients.



Our flagship product - Baby Bum Spray is designed to be an alternative and direct competitor to traditional nappy/barrier creams, just clean the area then confidently spray Baby Bum Spray and fasten the nappy, simple. No fuss, no need to wash your hands.

We also have recently added more products to expand our range:

- **Skin Relief:** This product is specifically designed for irritated or sensitive skin. It comes in our convenient spray format, making it The Smarter, Simpler Change with an extra gentle touch.
- **Mummy's Tummy:** Our Belly Oil is packed with nourishing and moisturising properties to support your skin before, during, and after the beautiful journey of growing your little one. Like all our products, it comes in a handy spray for added convenience.
- **Baby Body Spray:** Our Baby Massage and Moisturising Oil Spray is the perfect solution for after bath time or part of a bedtime routine, ensuring your little one's skin remains soft and smooth.

We are running a crazy sale for November just for locals to help get those gifts sorted in these hard times, use the code KUMEUCOURIER for 50% off your order. We also offer free order pick up for our locals and sometimes even drop off depending on where you live. Check us out on Facebook, Instagram or our website www.reidorganics.com.

Trueform Spa Pools, 35 years helping Kiwi families create their personal oasis.



Proudly Supporting The Third Annual Trueform Spa Pools Pro Am

Hole in One: Executive 6 Seat Spa Pool, retailing at \$17,000

Fundraising Auction: Miami 5 Seat Spa Pool, retailing at \$13,500

co.nz.

Trueform Spa Pools Pro-Am

Huapai Golf Club will welcome some of New Zealand's leading golf professionals when hosting the third annual Trueform Spa Pools Pro Am on Thursday November 9, presented by Econowaste and Primesure.

Huapai General Manager Andrew Dewhurst is delighted with the response from the New Zealand PGA, with a clutch of quality professionals set to chase the \$15,000 prize purse, headlined by multiple pro event winner and sometimes European Tour player Josh Geary as he continues a stellar season in New Zealand this year.



"We are thrilled with the caliber of golfers returning for our third Trueform Spa Pools Pro Am and even more excited to see Josh Geary back playing at Huapai again. Josh is on a brilliant run of form, having three victories in 9 starts on the NZ tour this year, including tying for first with another Huapai starter in Dongwoo Kang at the recent Spark Pro Am at Clearwater in Christchurch.

"There is depth throughout the field though, with a wonderful mix of experienced professionals such as Richard Lee and Gareth Paddison - both have won events around the world, and the hugely talented Harry Bateman, Fraser Wilkin, Jordan Loof, Charlie Smail, Kieran Muir, and a younger brigade of professionals such as James Tauriki, Benson Chen and our very own Jake Meenhorst who learned his game right here at Huapai."

In its third year, the tournament is already established as a popular stop on the New Zealand PGA Pro Am circuit, attracting a sold-out field of amateur golfers to play alongside and with the professionals (the team prizes include the professional contributing to scoring).

Dewhurst says the day is a celebration of the course, the club, and local sponsors.

"We are extremely proud of the support we receive from Trueform Spa Pools - a local business producing and delivering world class New Zealand made spa pools around the country, with their factory and head office in Helensville. Golfers get a shot at winning a \$17,000 Executive Spa Pool with a hole in one on the day and can bid on a Miami 5 Seat Spa Pool in our fundraising auction at prize giving.

"Trueform and our presenting partners Econowaste and Primesure are locally based businesses and individually are members of the club, joining forces to deliver an amazing day for everyone involved."



Community News

Warren Leslie is Managing Director of Trueform Spa Pools and plays his golf at Huapai. He loves the way the day showcases the course and club to the professionals and visiting amateur golfers.

"I am a proud Huapai Golf Club member and know what a Pro Am can do to showcase the course and club to a wider audience. As a local business we are proud of our involvement in the community and the quality product that we manufacture just down the road at our Helensville factory.

"Trueform Spa Pools support of the Huapai Pro Am combines all of those elements into one event that delivers a great experience to the amateurs and the professionals alike - it is a great fun day for all."

An added feature on the day is the Primesure One-Shot Shootout, with golfers qualifying during their round for a one-shot chance at winning \$500 on the short par 3 third hole next to the clubhouse.

Spectators are welcome at the event, with THE CLUBHOUSE Bar & Café open throughout the day for coffees and cold drinks, before welcoming the 120 strong field back for prize giving, a fundraising auction and a buffet meal after the golf concludes.

2023 Trueform Spa Pools Huapai Golf Club Pro-Am, presented by Econowaste and Primesure

Thursday 9 November

11am Shotgun start - free entry for spectators.

\$15,000 professional prize purse

\$20,000 + amateur prize table to be won

Mitre 10 MEGA Westgate Ladies' Night

It's that time of year again to get the girls together for a fabulous Ladies' Night out at Mitre 10 MEGA Westgate.

A night of fun with plenty to take park in, we expect a large crowd on the night, having received feedback from our previous events the Ladies have told us how useful it is to learn practical DIY skills, this year we have many suppliers showcasing their products along with demonstrations and engaging activities.

Build your own toolbox or planter box. Go in the draw to win fabulous prizes. the MoreFM team will be there with a POPPING interactive activity plus a great opportunity to pick up expert tips from our huge range of supplies and DIY experts, complimentary beverages & nibbles, 15% Storewide discount (T's and C's apply)



PDM Pressure Washing Services

HOUSEWASHING
GUTTERS
DRIVEWAYS
OWNER OPERATOR

020 4128 0826

plus giveaways galore.

Entry \$10 per person with proceeds going to Harbour Hospice. Wednesday 15 Nov 2023 from 7pm to 9:30, Mitre 10 Mega Westgate. Register in store or online for Ladies' Night at mitre10.co.nz/mega-westgate.

Lions give \$3000 to Riverhead Scouts

A very successful Huapai-Lions Book Fair has resulted in \$3000 going to Riverhead Scouts and its parent-support group.

Lions organiser Gary Moss says the late September fair was one of the most successful run in recent times.

The quantity of books donated by the community was overwhelming and along with good support from buyers resulted in a successful weekend Book Fair, he says.

Lions members require assistance for the project and working with a local community group such as Scouts fulfils one of the objectives of the Lions organisation which is to support youth in the local community, Gary explains.

He says it is unfortunate that several tonnes of unsold books were dumped at the Waitakere Refuse Centre which charges \$186 per tonne.

"However, many of the dumped books were old tatty books where people see the Book Fair as an avenue for getting rid of them.

"Similarly with magazines, encyclopaedias and dictionaries which no one buys go straight to the refuse centre."

Huapai-Kumeu Lions intend having another Book Fair in June next year.

Waimauku Kindergarten Open Day

Saturday 4th November 9am - 12pm

New families and whanau welcome

Come and Visit and see our beautiful kindergarten



In Brief

Join SeniorNet Kumeu and unlock the digital world

Are you a senior resident of Kumeu and surrounding area looking to enhance your digital skills and make the most of the technology-driven world we live in? If so, then SeniorNet Kumeu is the perfect community for you. With a mission to empower older adults through digital literacy, SeniorNet Kumeu provides an array of reasons why you should join this vibrant organisation. Lifelong Learning: SeniorNet Kumeu offers a supportive environment for seniors to learn and develop their digital skills. Whether you're a beginner or looking to sharpen your existing knowledge, the organisation's dedicated tutors are here to help you every step of the way. Connect with Peers: Joining SeniorNet Kumeu means becoming a part of a welcoming community of like-minded seniors who share a passion for technology whether an expert or an absolute beginner. It's a great opportunity to make new friends and foster connections with people who have similar interests. Stay Relevant: In today's world, digital literacy is more important than ever. SeniorNet Kumeu ensures that you remain relevant in your personal and professional life by keeping up with the latest technology trends and tools. Access to Workshops and Resources: SeniorNet Kumeu offers a wide range of workshops, covering everything from using smartphones and tablets to mastering social media. You'll also gain access to a wealth of resources designed to simplify your digital journey. Affordable Membership: Becoming a part of SeniorNet Kumeu is affordable, and the benefits are priceless. Your small membership fee allows you to tap into the world of technology with ease. Join SeniorNet Kumeu today and embrace the digital age with



confidence. It's never too late to learn, connect, and thrive in the digital world. Don't miss out on the opportunities that await you.

We meet the first Wednesday of the month except December and January at 10am at St Chad's Church Hall, 7 Matua Road, Huapai.

Christmas gifts with meaning

Christmas is coming.

Tired of buying generic, mass produced gifts?

Why not support local AND buy a gift that is custom made especially for your recipient.

Based in Muriwai, Jo from Precious Imprints hand crafts personalised, symbolic and fingerprint jewellery and keepsakes. Each piece is designed to represent the people, places or the things you love, therefore allowing you to keep them close always.



Whether it be the names of the special people in your life, significant dates, the latitude-longitude of first dates/wedding locations/favourite places, OR a design where the elements of the piece represent these things. Each piece is individually made to order just for you.

Choose from one of my designs or we can work together to design something truly unique and meaningful to your recipient.

Visit www.preciousimprints.co.nz or email - jo@preciousimprints.co.nz to discuss your ideas today.

Golf Club popular with players and local alike

Helensville Golf Club, who recently celebrated their 75th Anniversary over Labour weekend, are enjoying the prospect of a warm sunny summer after the challenges of 2022/23.

Timed to coincide with Daylight Saving, their Twilight Golf competition each Friday launched late September and is already surpassing all expectations.

"Last year we had a number of events washed out, or regular threats of rain caused many to second guess coming out to play" says Golf Manager Nathan Banks.

WAIMAUKU BOWLING CLUB



- Fun for all ages
 - Friendly sociable club
 - Friday night from 4:30pm
- come and have a go
 - Twilight bowls starting November
 - Bar and kitchen facilities and venue for hire
- Contact - Chris 027 498 3867
or Paula 027 946 4370

Cnr. State Highway 16 and Muriwai Road



Grant Castle



P (09) 412 8239
M 027 299 7054

106 Main Road, Kumeu
E castlepanelbeating@orcon.net.nz

In Brief

"However, just a few weeks into this season, we have had great numbers playing and enjoying dinner at the club afterwards."

In fact, Friday nights at the club are running hot at the club with the recently refurbished and newly named, Peak Café, seeing a great reaction to its new Twilight menu.

The club has committed to significant investment in both the course and clubrooms over recent years, a move that is paying off according to members surveyed earlier this year. A whopping 87% of respondents recognising the improvements over recent years.

"Investing in our course is key to ensuring we deliver a great experience to golfers, both members and green fee players. However, we've also worked hard to enhance the clubhouse" says Helensville Golf Club Manager, Sandy March.

"Investing in the café space was a significant decision but seeing a growing number of our local community coming in to enjoy a coffee and cake, or a full meal is really what it's about. We really want to be part of the community we operate in whether they play golf or not."

www.facebook.com/HelensvilleGolf

Save the Date: Muriwai Arts Trail Weekend 25 & 26 November

Art, eat, drink and play. Let's celebrate the arts. More than twenty artists from the local area including Kumeu, Muriwai and Helensville showcasing painting, photography, jewellery, ceramics, illustration, sculpture and textile art. Many are inspired by the rugged coastal environment of Muriwai.

Venues include Open Studios, Good From Scratch Cookery School, Kula Wellness Centre, Muriwai Lodge & Deli, Kumeu Art Centre and the Muriwai Golf Club. Visit artists and their open studios, galleries and taste local cuisine at four great Muriwai venues. Plus free sand art experiences for all ages. These artists (many award winning) aim to inspire and nurture creativity through workshops, exhibitions, open studios and unique experiences. Proudly part of the North West Arts charitable trust. For more details visit www.muriwaiartsopenstudios.com/



Leave the accounting to SBA Kumeu
So you can focus on growing your business.



SBA SMALL BUSINESS ACCOUNTING

021 245 2949 | kumeu@sba.co.nz
Catch up for a coffee @ your local cafe!

Lest We Forget

One of the artistic treats at St Chad's Huapai is this floor-to-ceiling stained-glass window. It was designed and crafted by Suzanne & Ben Hanly of Glassworks, Mt Eden. Based on local photos, it shows representations of four local buildings - a winery, the original Huapai St Chad's church built in 1925 and two typical homesteads reminding us of Maddren homes which was based in the area for a long time. As well as grapes, this area produced much fruit and had, as today, many pastoral farms. Our rich flora and fauna are represented by the clematis flowers, red for Pohutukawa and a kereru. The Kumeu River is seen flowing through, it having once been a vital transport link. Beneath the Southern Cross are images of the hand of God who is the source and supplier of everything, the Lamb of God representing Jesus who gave His life for us and a dove representing the Holy Spirit. You are welcome to come and view it, reflect on those who have gone before us and be reminded that God is here for us today and always.



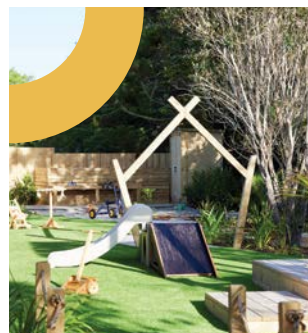
\$100 = Exposure for a month

Budgets are tight and advertising is often expensive, but it's nice to know that someone is making it easy and cost effective. For \$100 plus GST you can be exposed to over 20,000 locals for a whole month. That is only \$3.30 a day. For more information email our editor at editorial@kumeucourier.co.nz.

new shoots
CHILDREN'S CENTRE

302 Coatesville-Riverhead Hwy - 09) 304 0030

Where Children and Families Thrive Together



We'd love to welcome you and your family.
To find out more please visit

newshoots.co.nz/coatesville

Property

Property market report

Auckland's real estate market is experiencing a notable resurgence, marking the end of a one-and-a-half-year slump. Experts are optimistic about the latest statistics, indicating a clear recovery that is breathing new life into the property sector. While this resurgence brings good news for homeowners witnessing the increase in property values, it also poses challenges for first-time buyers.



According to the recently published CoreLogic house price index, Auckland saw a 0.4 percent increase in property values in September, marking the first positive growth since March 2022. This encouraging trend contributes to the broader picture of national recovery in the housing market. The data reveals that the average New Zealand house now costs \$905,445, with the average Auckland house reaching \$1,259,296.

This positive trajectory is underscored by the third consecutive report from property analysts, all of which affirm a rebound in national house prices. Residential sales have been holding onto gains since August, reinforcing the notion that the market is regaining its strength.

Specifically focusing on Auckland, the OneRoof report highlights a 1.6 percent increase in the average property value over the past three months, now standing at \$1,302,000. This upward movement not only indicates the end of the downturn in Auckland but also suggests a robust finish for the city's real estate market by the end of the year.

Buyers in Auckland are currently navigating a dynamic and

accelerating property market. Over the last three months, prices have been picking up momentum, and auction rooms are witnessing their strongest competition in almost two years. In essence, the message to prospective buyers and sellers is clear: if you're considering entering the market, now is the time to act. Let's look at the recent sales:

Coatesville	\$1,680,000
Helensville	\$817,500
Huapai	\$980,000 to \$1,625,000
Kumeu	\$670,000 to \$1,925,000
Parakai	\$656,000 to \$680,000
Riverhead	\$1,100,000 to \$1,250,000
Swanson	\$673,000 to \$1,490,000
Waimauku	\$570,000 to \$1,300,000
Westgate	\$790,000
Whenuapai	\$1,080,000 to \$1,280,000

Ready to take advantage of this regenerating market? For a complimentary market appraisal and the latest market updates, reach out to Graham McIntyre AREINZ directly at 0800 900 700, via text at 027 632 0421, or through email at graham.mcintyre@mikepero.com. Mike Pero Real Estate Kumeu/ Hobsonville. Licensed REAA2008

Don't miss your chance to be a part of Auckland's reviving real estate scene. The future is bright, and the opportunities are positive!

Can I sell my property with unconsented work?

By Elyse Crowther, Registered Legal Executive, ClearStone Legal

Now that spring has well and truly sprung and summer is on its way, we're seeing a lot more properties coming onto the market. One of the questions we're often asked by buyers and sellers alike, is can a property be sold with unconsented work?

We're a nation of DIYers - as the advert says - DIY is in our DNA! Unfortunately, this means that on occasions, property owners undertake renovations and changes to their home, without obtaining the required consents from Council. These are called "unconsented works". When you do come to sell your property, you have an obligation to disclose this to potential buyers. This applies whether you have



the
rentshop

Mike
James

Managing Director

☎ 021 413 660

✉ mike.james@therentshop.co.nz

The Rent Shop Hobsonville Ltd
PO Box 317118
Hobsonville
Auckland 0664

www.therentshop.co.nz



Scan me to view our listings & apply online.

CLEARSTONE
LEGAL

Call now to discuss your legal needs

p: 09 973 5102
w: cslegal.co.nz

Kumeu Office
1A Tapu Road, Kumeu

Te Atatu Office
1/547 Te Atatu Road
Te Atatu Peninsula

Property

made the changes, or if you have purchased a property knowing that there is unconsented work and are now wanting to sell it.

When you are selling a property with a standard Agreement for Sale and Purchase, you are effectively telling prospective purchasers that any work you have done to the property was undertaken with all the necessary Council consents. When this is not the case, an additional clause should be added to the Agreement outlining those works and advising purchasers that those works are not consented. If you fail to include this clause, you may be liable for compensation claims from the purchaser.

Additionally, if you are selling a property and are aware that a previous owner undertook unconsented works, then you need to make sure your Real Estate Agent discloses these to any potential purchaser. Examples of unconsented works could include removing load bearing walls, adding sanitary fixtures such as a toilet or sink, or installing a tiled shower.

If you're considering selling, we recommend discussing any potential consent issues with us before the property goes onto the market. This way we can confirm what your disclosure requirements are and draft an appropriate clause if required. We are always very happy to provide advice before you sign any Agreement for Sale and Purchase, so if you have queries give us a call on 09 973 5102 or make a time to pop in and see us at either our Kumeu or Te Atatu office.

The ripple effort

Within the Property Management Industry, one topic that frequently arises in both social conversations and discussions with our valued investors and landlords at The Rent Shop pertains to the impact of elections on the residential property market.



Over the past six years, there has been a prevailing perception that the incumbent government has implemented measures with significant repercussions for residential property investors. These measures encompass an extension of the Brightline Test, the introduction of Healthy Homes legislation, alterations in tenancy laws, changes in mortgage interest deductibility, and shifts in immigration policies.

While the Healthy Homes legislation has faced criticism due to the associated costs for homeowners, it has undeniably resulted in warmer, drier, and more secure homes. These improved living conditions have translated into longer tenant occupancy and a willingness to pay slightly higher rents, benefiting all parties involved.

Conversely, there has been debate regarding a perceived shift in the balance of power towards tenants, with the abolition of no-cause terminations and limits on rent increases. However, I've observed that tenants may also face challenges, as it has become more difficult to evict problematic tenants. Consequently, our property managers exercise greater caution when selecting tenants, favoring those with impeccable credentials.

In my assessment, the change in mortgage interest deductibility has the potential to be the most impactful measure, particularly for property owners with moderate to substantial mortgage finance. What seemed complacent when interest rates were at 2.7% now carries more weight as rates have risen to around 7.9%.

With the relaxation of border restrictions in response to the COVID-19 pandemic has led to a net gain of 65,000 immigrants in New Zealand in the year ending March 31, 2023, with Auckland being a primary destination. This has increased demand for rentals and purchasing of properties in the city.

The city's growth continues unabated, evident from record tenancy numbers and inquiries. Regardless of the election outcome, this trend is expected to persist, with one significant exception that could boost the market: the potential reversal of the new interest deductibility rules.

The reversal of interest deductibility would hold significant implications for the investment market, particularly given recent interest rate hikes. While the theory behind allowing deductibility on new builds is sound, practical challenges arise when building costs soar and materials become scarce.

Regarding the reduction of the Brightline Test to two years, I perceive it as less significant, given my longstanding advocacy for not selling properties. Furthermore, Healthy Homes legislation has not deterred investors as anticipated. Our TRS team has achieved an impressive milestone, with more than 80% of our properties inspected and compliant. I now view our warm, dry, and secure homes as the benchmark for all rental properties.

In conclusion, the property market operates cyclically, experiencing

Burnetts

SEPTIC & WATER TANK CLEANING

YOUR SEPTIC TANK SHOULD BE CLEANED EVERY 3 YEARS (AVERAGE FAMILY OF 4)

WE SERVICE ALL AREAS

PROMPT, PROFESSIONAL SERVICE WITH 30 YEARS EXPERIENCE

PHONE: 09 412 9210 OR 027 492 4494



VODANOVICH
LAW

SALES & PURCHASE OF REAL ESTATE

RELATIONSHIP PROPERTY | BUSINESS STRUCTURES

POWERS OF ATTORNEY | WILLS & TRUSTS

COMPANY & EMPLOYMENT LAW

PLEASE CONTACT IVAN

ivan@vlaw.co.nz 09 412 8000
4a Shamrock Drive Kumeu, Auckland

Property

peaks, declines, bottoms, and recoveries with varying durations and magnitudes. While hindsight offers valuable perspective, the Auckland market remains robust, characterised by unprecedented occupancy rates. Looking ahead, it is reasonable to anticipate a positive trajectory in the property cycle. The future holds promise, with potential changes in government policies adding a layer of uncertainty to an already dynamic market.

If you're wanting to speak more in detail with our specialist team, feel free to contact us. Mike James 021 413 660

Six must-do's in matrimonial separation

Navigating a matrimonial separation can be a complex and emotionally challenging process. It's important to approach it methodically and consider various legal, financial, and emotional aspects. Here's a step-by-step guide to help you through the process, including dealing with assets:



Seek Legal Advice: Consult with an attorney who specialises in family law. They will help you understand your rights, responsibilities, and the legal implications of your separation.

Collect Important Documents: Gather all relevant documents, such as marriage certificates, financial records, property deeds, bank statements, tax returns, and prenuptial agreements.

Temporary Living Arrangements: Decide whether you and your spouse will continue living together during the separation or if one of you will move out temporarily. This should be discussed and

agreed upon if possible.

Child Custody and Support: If you have children, establish a temporary custody and visitation plan. Determine child support arrangements according to your state or country's laws.

Spousal Support: Discuss and potentially negotiate spousal support, if applicable, based on factors such as income, length of marriage, and financial needs.

Asset and Debt Inventory: Create a comprehensive list of all assets (e.g., real estate, vehicles, investments) and debts (e.g., mortgages, loans, credit card debts) acquired during the marriage. This will be crucial for property division.

For a complete step-by-step guide and a matrimonial separation checklist contact Graham McIntyre AREINZ on email [graham.mcintyre@mikepero.com](mailto:mcintyre@mikepero.com) or call/text 027 632 0421. With over 17 years operating at the top of the real estate market and with AREINZ qualification, Graham is a proven, stable, professional by your side helping and guiding you to the very best decisions and outcome.

Refinancing

Mortgage refinancing involves repaying your current mortgage and taking out a new loan with different terms, usually with the goal of obtaining better conditions. This can involve working with your existing lender or switching to a new one, depending on which best meets your needs.



There are various reasons why homeowners choose to refinance their mortgage. Some of the most common include:

Reducing monthly payments: By extending the loan term or securing a lower interest rate, refinancing can help lower your monthly payments, providing more financial flexibility.

Debt consolidation: If you have high-interest debt, such as credit card balances or personal loans, refinancing your mortgage to consolidate these debts can save you money and simplify your finances.

Accessing equity: Refinancing can allow you to tap into your home's equity for various purposes, such as home renovations, education expenses, or investments.

Evaluating Your Current Mortgage:

Before considering refinancing, it's essential to evaluate your current mortgage to determine whether it's meeting your needs:

KEMP BARRISTERS & SOLICITORS

Your local team of legal experts

Property Law

Litigation

Family & Relationship Law

Trust & Asset Protection

Wills & Estates

Commercial Law

info@kempsolicitors.co.nz
09 412 6000
25 Oraha Road, Kumeu



Friendly
Legal
Experts

- Property Law
- Business Law
- Employment Law
- Debt Collection
- Family Law
- Family Trusts
- Estates
- Wills

smith
AND PARTNERS

LAWYERS

293 Lincoln Road
Henderson, Auckland
PH: 09 836 0939
smithpartners.co.nz

Property

Interest rate: Check if you are paying a competitive interest rate since you first obtained your mortgage.

Loan term: Is the length of your mortgage term appropriate for your financial situation, or would you benefit from extending or shortening the term?

Repayment flexibility: Does your current mortgage allow for extra repayments, lump sum payments, or other flexible repayment options that suit your financial goals?

When to Refinance Your Mortgage:

Timing is crucial when it comes to refinancing your mortgage. Here are some factors to consider when determining the best time to refinance:

Interest rate environment: Keep an eye on market trends and consider refinancing when you are about to come off a fixed term to see if you can obtain a better rate with another Lender.

Credit score improvements: If you are with a non-bank lender your credit score may have improved since you first obtained your mortgage, you may qualify for better loan terms with a mainstream lender.

Equity accumulation: As you build equity in your home, refinancing can become more appealing, whether for accessing funds or securing better loan terms.

Changes in financial circumstances: Major life events or changes in your financial situation such as a salary increase, windfall or expanding family, may warrant refinancing to better align with your needs.

Costs Associated with Refinancing:

This one can catch you out if you haven't been informed properly. While refinancing can lead to significant savings, it's important to consider the associated costs, which may include:

Break fees: If you have a fixed-rate mortgage, it's essential to consider the potential costs of refinancing before your fixed term expires. Breaking a fixed-rate mortgage early, can result in break fees or penalties.

Legal fees: You may need to work with a lawyer to handle the necessary documentation and registration, which can involve legal fees.

Repayment of incentives: If your original mortgage included incentives, such as a cash back you may need to repay this if you refinance before the specified loyalty period ends.

So, if you're considering refinancing your mortgage, get in touch to make sure it's the right move for you. Stephen Massey - Mortgage Advisor and First Home Specialist, Call or Text 021 711 444.

Paying GST when purchasing a property

When purchasing a property, the parties to the sale and purchase agreement elect whether the purchase price includes GST or not. A vendor such as a developer may be GST registered. Accordingly, the purchaser will be liable for GST on the purchase price (unless the price is agreed to be GST inclusive). Zero rating can be a possibility where:

- the vendor is GST registered at settlement;
- the purchaser is GST registered at settlement;
- the purchaser (or any associated person) will not be using the property as a principal place of residence; and
- the purchaser will use the property to make taxable supplies.

Importantly, residential rental is not a taxable supply. Therefore, even a GST registered purchaser may not claim the transaction to be a zero-rated transaction.

Given the value of properties in New Zealand, GST issues can have a big financial impact on a property transaction. We recommend that when buying or selling a property that you obtain advice on any tax issues before signing the agreement. For more information on this or any other legal issues contact Kemp Barristers & Solicitors at info@kempsolicitors.co.nz or 09 412 6000.

\$100 = Exposure for a month

Budgets are tight and advertising is often expensive, but it's nice to know that someone is making it easy and cost effective. For \$100 plus GST you can be exposed to over 20,000 locals for a whole month. That is only \$3.30 a day. For more information email our editor at editorial@kumeucourier.co.nz.

Quality Steel Sheds, Designed for You.

Lifestyle & Residential Sheds, Farm Sheds,
Commercial & Industrial Buildings

- Tailored to your specific needs
- Built up to 30m wide (span) and 7m stud height
- Made with .40-gauge steel roof and cladding for lasting durability
- Designed and engineered in NZ for your environment
- Building consent process handled by our team
- Locally owned and operated in Kumeu



KiwiSpan Kumeu
329 Main Road,
Huapai, Auckland 0810



0800 870 078
09 412 8455



www.kiwispans.co.nz
kumeu@kiwispans.co.nz



Hot Property



Brick and Tile on 704sqm (approx.) - Family Oasis

A beautifully appointed and finished Ashcroft Home, offering an easy living 237sqm (approx). floor-print and a generous 704sqm (approx). section-size.

From entrance to entertainment area the home seamlessly caters for a family that respects space, quiet and independence, offering two separate bedroom wings, entertaining and a multi-room offering

media/ office/ guest room options. Four rooms and two bathrooms, separate laundry and oversized double garage.

A large entertainers kitchen/lounge/dining leading to outside decking and lawn with established fruit trees and easy care garden. So much to see, and plenty to impress.

This Ashcroft Homes build does set a high standard and certainly a great home to make your own.

The CV on this property is \$1,525,000. We are happy to supply a list of the last 12 months of transactions in this area. For a complete transaction list please email graham.mcintyre@mikepero.com.

Hot Property



For more information on this property call Graham McIntyre on 027 632 0421 or graham.mcintyre@mikepero.com - Mike Pero Real Estate Ltd Licensed REAA (2008).

Area Property Stats

Every month Mike Pero Real Estate Kumeu assembles a comprehensive spreadsheet of all the recent sales in the area that reviews the full range of Residential transactions that have occurred.

To receive the full summary simply email the word "full statistics" to kumeu@mikepero.com. This service is free from cost.

SUBURB	CV \$	LAND AREA	FLOOR AREA	SALE PRICE \$	SUBURB	CV \$	LAND AREA	FLOOR AREA	SALE PRICE \$
COATESVILLE	2,625,000	1.2HA	120M2	1,680,000		1,180,000	809M2	123M2	1,250,000
HELENSVILLE	890,000	921M2	160M2	817,500		1,130,000	877M2	108M2	1,100,000
HUAPAI	1,475,000	1565M2	243M2	1,380,000	SWANSON	1,150,000	374M2	178M2	1,215,000
	770,000	688M2	100M2	980,000		1,250,000	448M2	200M2	1,180,000
	1,475,000	643M2	223M2	1,210,000		1,130,000	400M2	160M2	960,000
	1,300,000	428M2	208M2	1,345,000		1,375,000	886M2	251M2	1,490,000
	1,250,000	606M2	162M2	1,101,010		1,000,000	310M2	155M2	1,100,000
	1,550,000	626	249M2	1,625,000		760,000	353M2	90M2	673,000
	1,225,000	451M2	181M2	1,330,000	WAIMAUKU	1,600,000	1.25HA	135M2	1,300,000
KUMEU	850,000	158M2	98M2	738,000		1,025,000	1012M2	123M2	925,000
	1,225,000	356M2	180M2	1,154,500		780,000	1379M2	0M2	570,000
	1,850,000	8224M2	192M2	1,925,000	WESTGATE	865,000	153M2	71M2	790,000
	800,000	91M2	91M2	625,000	WHENUAPAI	1,405,000	923M2	197M2	1,280,000
	1,125,000	400M2	169M2	1,030,000		1,195,000	384M2	124M2	1,080,000
	700,000	0M2	82M2	670,000					
PARAKAI	780,000	0M2	150M2	656,000					
	765,000	1012M2	96M2	680,000					
RIVERHEAD	1,300,000	800M2	180M2	1,155,000					

DISCLAIMER: These sales figures have been provided by a third party and although all care is taken to ensure the information is accurate some figures could have been mis-interpreted on compilation. Furthermore these figures are recent sales over the past 30 days from all agents in the area.

Mike Pero's **low** commission rate:

2.95% up to \$490,000

(Not 4% that others may charge!)

1.95% on the balance

Plus \$490 admin fee. All fees and commissions + GST

Mike Pero Real Estate Kumeu also provide statistical data FREE from cost to purchasers and sellers wanting more information to make an informed decision.

Phone me today for a FREE summary of a property and surrounding sales, at no cost and no questions asked. Graham McIntyre 027 632 0421

*Available for a limited time. Conditions apply.



Graham McIntyre
Brand & Territory Owner
027 632 0421

mike Pero | REAL ESTATE

This page is sponsored by Mike Pero Real Estate, Kumeu
Phone 0800 900 700 Licensed REAA (2008)

IGNITE THE HOLIDAY SPIRIT THIS SEASON!

Let's collectively illuminate our neighborhood
in a dazzling display of Christmas cheer!

WIN! ONE OF SIX
\$100 VOUCHERS

from Mitre 10 Mega and Aussie Butcher

Come together with your fellow residents for this year's Christmas Light Spectacular, as we adorn our homes with vibrant festive lights starting November 1st.

Supported by:

REAL ESTATE
Mike Pero
KUMEU | HOBSONVILLE

THE ORIGINAL
Aussie
BUTCHER KUMEU

MITRE 10
MEGA
WESTGATE

Register your home



for a chance to WIN
and let your holiday
spirit shine brighter
than ever!

Winners announced Friday 15 December 1pm

*Terms and conditions apply, visit mikepero.com/festivelights. View privacy policy at www.mikepero.com/privacy-policy. Follow instructions on the information/ email provided. MPRE takes no responsibility for any loss or damage caused as a result of participation. Mike Pero Real Estate Ltd. Licensed REAA (2008).

NOW'S A GREAT TIME TO BUILD



Matt & Rachael
– Rodney West
Franchise Owners

- From design to moving in, build times are at their best.
- High builder and trade availability allows for good choices.
- The best selection of building products are now in full supply.
- Faster processing times for council and engineering. No unnecessary delays.
- New H1 building standards for better living and greater energy efficiency.
- Banks are more open to negotiations on lending terms and fees.
- It's often more affordable to build new than buying a comparable existing home.

Your key to success and keeping your investment safe, choose a building partner with a history of success, proven performance, and a reputation you can trust.

**HERE TODAY
AND TOMORROW**

G.J. Gardner. HOMES

GREAT HOMES, AMAZING PRICES



Island Express

from \$416,000*

4 2 2 174.9m²



G.J. Gardner has an extensive range of customisable plans to suit all kinds of families, lifestyles and budgets.

From modern, stylish homes at an affordable price to sprawling country estates, every plan has been thoughtfully designed to suit New Zealand's landscapes so your home will always look at home in its surroundings.

View our full range of concept plans at gjgardner.co.nz. We can also design a new home for you from scratch.

For free expert advice, contact GJ's today.

09 412 5371 / gjgardner.co.nz

*Price is an indication of the build cost only and excludes land and site specific costs. Some conditions may apply. Images are artist's impression only.
Island Express Floor Plan © G.J. Gardner Homes 2023

G.J. Gardner. HOMES



BUSINESS - TOWN CENTRE ZONE - HUAPAI

3 1 1

By Negotiation

8 Oraha Road, Huapai By Negotiation

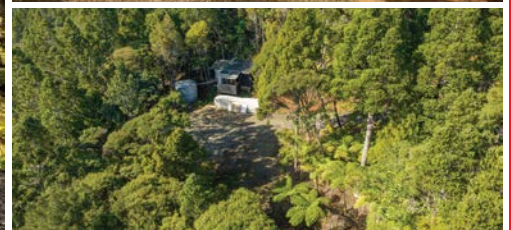
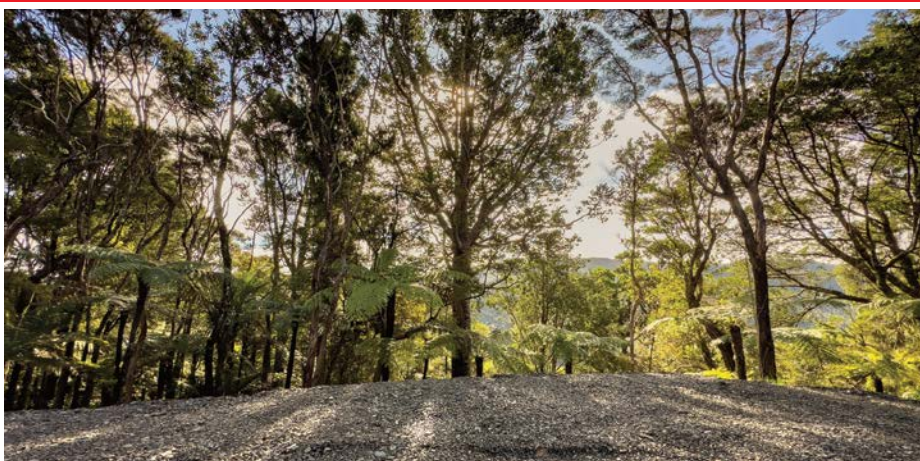
Nestled to the Eastern boundary of the Huapai Business Zoned area is this generous 869sqm parcel of land offering a flat section which shoulders the carparking and the Police Station at Huapai. A stately three bedroom bungalow with open plan kitchen, dining and living room leading onto westerly decking. A large shed and carport offers storage options while the yard is full of mature fruit trees. Fully fenced, flat section with services in the street. A short distance to parks, schools and convenient transport links. Invest today for options tomorrow.

www.mikepero.com/RX3226379



Graham McIntyre
027 632 0421
09 412 9602

graham.mcintyre@mikepero.com



ELEVATED NATIVE GLADE - OUTSTANDING BUILDING SITE

By Negotiation

15 Te Aute Ridge Road, Waitakere By Negotiation

Fabulous opportunity to create your very own slice of paradise, with multiple building site options and driveway access in place. The site provides expansive North facing valley views through established native bush cover, providing some stunning visual aspects and the song of Tui and Kereru. A transportable solar one bedroom working shed adds value to a buyer wanting to experience the best of site before building. Come view this dynamic landscape and plan your future with one of the very best North facing building sites on market for a very special home. Te Atute Ridge Road has an east and a west access, the latter is a gentle hill climb with the eastern road being a steeper gradient. Therefore you may like to drive the circuit and enjoy the best aspect of this idyllic environment.

www.mikepero.com/RX3758203



Graham McIntyre
027 632 0421
09 412 9602

graham.mcintyre@mikepero.com



FLAT LAND - BIG SHED - AQUAFER BORE

By Negotiation

Lot 2 / 337 Ararimu Valley Road, Helensville By Negotiation

Offering a flat and usable 2.3 hectare (approx) land lot offering some significant benefits:

- An unconsented 150sqm (approx) plus high stud barn
- A deep bore with water rights accessing a deep spring aquifer
- A pre-existing house site (house removed) with septic and water tanks
- Power, water and waste infrastructure on site

This is a rare opportunity to buy land that has infrastructure already in place, and although it has no house on site it offers opportunity and improvement value.

www.mikepero.com/RX3570208



Graham McIntyre
027 632 0421
09 412 9602

graham.mcintyre@mikepero.com



LIFESTYLE, MIXED GRAZING/ REGENERATING BUSH

2 1

By Negotiation

1529 South Head Road, South Head By Negotiation

4.3 hectares (approx.), a short distance from Shelly Beach, West Coast Beaches, Golf Club and fabulous Waioneke School. An interesting and undulating parcel of land offering grazing and regenerating native bush providing the perfect backdrop to a simple but adorable two bedroom, board and baton home. Open plan living, dining, entertainers kitchen with central hallway accessing two north-east facing bedrooms, separate bathroom and laundry with storage options. Follow the farm track to the hill-top to enjoy an elevated potential house site and views through the valley to the mighty Kaipara Harbour, framed by rolling farms.

www.mikepero.com/RX3761280



Graham McIntyre
027 632 0421
09 412 9602

graham.mcintyre@mikepero.com

Home & Garden

Need a tiler - Tile Wright

Now's the time to start thinking about that kitchen, bathroom, laundry project.

We are now carrying out free no-obligation quotes for your tiling needs; kitchens, splash backs, bathrooms, under floor heating and laundries.

We specialise in all things tiling; providing high quality services including Auckland Council approved water proofing, bathrooms, kitchens and splash backs.

With over 6 years' experience in the industry, we pride ourselves on high quality workmanship.

We cover most of Auckland, have competitive prices and offer a workmanship warranty on all work. No job too small, we cover it all.

Call us today on 027 260 8225 for a free no-obligation quote.



Laser Whenuapai and Roofing Whenuapai

We are heading into the last month of spring, daylight savings is here giving us longer, lighter days and summer is just around the corner. This time of the year not only brings more sunshine and warmer weather but is an ideal time to sort out some of



Ever had mess left behind?



No mess, no dodgy products & no run around. We guarantee it.

Ph: 09 417 0110

Roofing | Plumbing | Drainage | Gas fitting
Drain Un-blocking | 24 Hr Service



"Totally Dependable"

Laser Plumbing
Whenuapai

whenuapai@laserplumbing.co.nz

www.whenuapai.laserplumbing.co.nz

the post winter jobs around the house.

After a long rainy, windy winter, your gutters and downpipes may be full of leaves and other debris. This is a perfect time to clean out your gutters and downpipes. This will also help prevent leaks in your home.

It's also a good time to check your pipes, toilets and taps for water leaks. Leaks use unnecessary water and hike up your water bills.

We are experts in everything plumbing and roofing, so will find the right solution for any leaks or issues you may have. From basic tap washers and blocked toilets right through to re-piping, re-roofing, drainage, or gas systems, we can help...no job is too big or too small.

We offer a Supergold card discount too! Just let us know you have a Supergold card when you book in your plumbing job, and we will give you 20% off your first hour of plumbing labour.

Open five days a week from 7:30am-4:30pm, Laser Plumbing & Roofing Whenuapai is conveniently located at Unit 4, 3 Northside Drive, Whenuapai.

Contact us today on 09 417 0110 or whenuapai@laserplumbing.co.nz or visit our website at laserplumbingwhenuapai.co.nz for more information about our company and services.

Blackout Electric

Blackout Electric is a local family owned and operated business, run by Sebastian Weaver, a registered Electrician with over 17 years' experience in the industry.

After completing his apprenticeship and spending a number of years working for electrical companies, learning the ins and outs of the industry, Seb decided it was time to go out on his own and build his own business from the ground up - since then, he hasn't looked back.

Nearly 3 years on we have 4 staff including a new apprentice who we just had start at the beginning of 2023. Aligning with supporting local, two of our staff are out of Kaipara College, which Blackout supports via their Gateway Programme. Seb is incredibly passionate about passing on his knowledge to others who want to be in the trade, and really enjoys seeing them succeed and become successful electricians themselves.

Since starting Blackout Electric, the support and loyalty we have experienced from locals is second to none. Customers who not only continue to use our service, but refer and recommend us to their own family and friends. This is a testament to the service we provide, and the reason we continue to grow as a business. Seb is highly experienced in delivering cost-effective, high quality workmanship



BLACKOUT
ELECTRIC

022 500 5856
info@blackoutelectric.co.nz
www.blackoutelectric.co.nz

Home & Garden

- offering solutions, not problems. At Blackout Electric, we pride ourselves on exceeding client's expectations. We build a relationship with our customers that begins on the first day of contact, and only ends once they're fully satisfied with our work.

We specialise in all forms of residential and commercial electrical work. Including new builds and renovations, alarm systems, CCTV and AV, and general maintenance - From something as simple as a new power point, to an entire house rewire, Blackout Electric is happy to help.

Contact Blackout Electric for all your electrical service needs. We can be found at www.blackoutelectric.co.nz or info@blackoutelectric.co.nz.

Plant Pass

Are you a plant nursery or landscaper and would like to get more involved in Plant Pass? Plant Pass is a national certification scheme for nurseries and nursery suppliers (landscapers can be a part of this) to show that you are managing your biosecurity risks. With diseases like kauri dieback and myrtle rust becoming more common, plant buyers are looking to identify



nurseries that have good hygiene practices.

Nurseries can consider joining the Plant Pass scheme. It involves a short course then completing a checklist of nursery practices, showing what practices are followed and what systems in place.

The programme is managed by the Ministry for Primary Industries and can be daunting for nurseries, yet vital to your continued competitiveness. Alongside this, plant buyers are joining the Plant Buyers Accord, which means they are committed to buying plants from Plant Pass certified nurseries.

New Zealand Biosecurity Services Limited can help your nursery to become certified and take the hassle out of signing up. They can also help all nurseries to manage pest ants, plague skinks, kauri dieback, myrtle rust, and general nursery hygiene. For more information contact Danielle Hancock on 09 447 1998 or Danielle.Hancock@biosecurity.net.nz.

Kumeu Community Garden

Well spring has finally arrived, and with the weather being so changeable, having a chance to get our hands dirty has been very challenging.

In recent weekends, we have harvested the last of all the winter greens, silver beet, spinach, and sorrel, with asparagus spears also making their presence felt. Excess greens have made their way to local foodbanks, to help local families in need.

The damp conditions, combined with fallen foliage on the garden

WYATT
LANDSCAPE
SUPPLIES

0800 638 254 www.wyatts.net.nz

Stones, Rocks, Pebbles,
Scoria, Spawls, White Chip,
Pavers, Rock Walls
(huge variety)

Sand, Asphalt

Mulch (great selection)

Bark, Ponga Logs

Top Soil, Potting Mix,
Garden Mix, Compost

Concrete, Mortar

Garden Tools,
Equipment, Gloves

Weedmats & Pins

Fertilisers, Weed Killers,
Supplements etc

Grass Seeds

Sleepers

Pothole Mix, Builders Mix

Drain Coils

Tree Stakes

Firewood

Plus loads more...

Courtesy Trailers
plus we deliver

Best service, best products, best advice!

WAIMAUKU: 948 State Highway 16. Ph 411 9604

DAIRY FLAT: 1431 Dairy Flat Highway. Ph 212 3660

WARKWORTH: 371 Woodcocks Road. Ph 09 425 0417

MANGAWHAI: 107 Mangawhai Road. Ph 09 431 5445

OPEN 7 DAYS

WYATTS.NET.NZ

Home & Garden

beds has meant an influx of snails and slugs, but we have utilised coffee grounds from workplaces to create natural barriers around our new seedlings, which include five varieties of tomatoes, four varieties of lettuce, peas, and a selection of herbs. Our excess soil pile has been converted into a potato pit.

Feel free to pop down and enjoy the garden at Oraha Road and follow us on Facebook to stay up to date with working bees and other garden events.

2024 Sculpture Exhibition – grand opening

Saturday 2nd December 2.00pm to 5.00pm. A key attraction of the Kaipara Coast Plant Centre is our beautiful Sculpture Gardens. Each year the 40 sculptures, created by local and overseas artists, are replaced and remain on continual display for the following 12 months.

Gather up your friends and family and come along for this

year's grand opening of the new exhibition and be amongst the first to see these wonderful artworks which are located along the 1km gardens trail. There will also be opportunities to mingle with the artists as well as drinks & nibbles to enjoy.

There is also our nature trail, which covers an additional 2.5km, for you to explore. This is set in the lovely Kaipara countryside and placed so as to blend sympathetically with the surrounding environment and offering some great views of the Kaipara.

This is a great way for all the family to spend a fun and relaxing



PROUD TO SERVE OUR LOCAL COMMUNITY WITH SEPTIC TANK EMPTIES AND MAINTENANCE.

0800 493 768
www.hydrovac.co.nz



afternoon as we also have an extensive kids play area plus BBQ area within the gardens.

There is also our cute little coffee shop on site plus of course the Plant Centre for you to browse through.

Our knowledgeable and friendly staff will also be on hand to help with any garden related questions.

* Please note: Trails not suitable for wheelchairs or walking frames.

To book tickets for the opening event, please go to: www.kaiparacoast.co.nz

Venue location 1481 Kaipara Coast Highway (SH16), 4km north of Kaukapakapa. Tickets: Adults \$15, Gold Card \$12.00, Children (5-13) \$7.50 (under 5's free), Families (2A + 3C) \$35, to book go to www.kaiparacoast.co.nz.

Subdivide and build with Signature Homes West & North-West Auckland

Do you own extra land and wonder how to maximise its potential?

Why not explore the potential for financial rewards by considering the construction of an additional house and subdividing your property?

To simplify the process, Signature Homes offers a subdivide and build service that takes care of every step for you.

We provide you with access to a team of expert consultants all under one roof, including surveyors, town planners, architects, new home consultants, and project managers.

You can trust us to handle every detail, ensuring a seamless and stress-free subdivide and build experience. We will collaborate with you at every stage, helping you choose the right layout, design, and materials, so you can create an investment home that reflects your unique vision.

Enjoy peace of mind and security throughout your build journey with our marketing-leading building guarantees, including our fixed price guarantee.

It's all here for you - Whether you're in search of a House & Land package or you're a landowner seeking a tailored design & build solution, you'll find everything you need with Signature Homes West & North-West Auckland, your trusted new home builders.



NOR-WEST AND KUMEU GLASS SERVICES

"Specialists in Windscreens & Glazing"

Some of our services include: Residential and Commercial Glass Repairs - Automotive Glass Repairs - Cat/Dog Door Installs - Splashbacks - Mirrors - Picture Frames - Double Glazing - Caravan and Boat Windows - Car and Truck Mirror Repairs - Stonechips

**CALL - 09 412 9914 | nwkg@xtra.co.nz
9a Weza Lane, Kumeu, Auckland 0810**

Home & Garden

No job is too big or small, and our team of experts will guide you through the new home-building process step by step with care.

Visit our Signature Homes Huapai Showhome - Searching for inspiration for your new home? Visit our award-winning Huapai Showhome and experience the exceptional craftsmanship that Signature Homes West & North-West Auckland has to offer.

Located at 190 Matua Road, Huapai and open daily from 12pm-4pm.

Want to know more? Contact Signature Homes West & North-West Auckland on 0800 020 600 to assess your project today.

The heart of the home

They say that the kitchen is the heart of the home. If you're looking to sell up, there is no doubt a well-presented kitchen adds value. And if you're in it for the long haul, a warm and inviting kitchen is at the heart of family life.



We've been creating kitchens at Natural Timber Creations since 1981 so we know what we're talking about. We have the experience, the expertise and we know what works for our clients. Being a custom kitchen outfit means we listen to what you want.

We take your ideas, combine them with our extensive experience to give you just what you asked for and more; an exceptional quality finished product at that.

We are a one stop shop from design, manufacture through to installation - the same folk complete the entire job, and are invested during all points of the process.

We are experts in timber manufacturing but that doesn't stop us from realising your dream in any finish or style. Take a look at our website: www.naturaltimbercreations.co.nz or contact Paul Marley on 021 111 9637.

Waimauku Garden Club

What a stunning Day for our outing to Touch of the Tropics Nursery Whenuapai. We had an interesting talk from the owners before wandering around this unique jungle environment with established tropical and native trees. It was like being transported to another world of creativity with something different around each corner, be sure to watch out for King Kong. This garden center showcases plant combinations specifically suited for their location. Inspirational. Also in Whenuapai, we visited Totara Waters Garden which was recently awarded the honour of being one of New Zealand's "Gardens of National Significance" It has a large variety of Bromeliades and other subtropical plants for sale not often seen in most gardens. Just glorious. After a lunchbreak of our choice of local cafes, we went on to Coatsville to visit Mincher 6 Star Garden of Internation

VISIT OUR NEW HUAPAI SHOWHOME

To experience the difference



190 MATUA ROAD, HUAPAI

OPEN MONDAY - SUNDAY | 12PM - 4PM

Home & Garden

Significance. The owners took us on a tour of their lovely gardens, old orchards, ponds, formal and informal planting surrounding a Georgian-styled home in this delightful large rural garden. Explore the "bottom ponds", a lush New Zealand planting with a European lean. Then wander along the bush walk to the traditional English walled kitchen garden with its Victorian-inspired glasshouse. Mincher is home to a variety of waterfowl and birdlife. The most wonderful day was enjoyed by all.

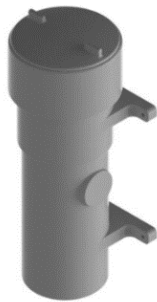
If you wish to join our club and join us on our monthly outings, feel free to contact any of us: Ann (021 035 7406), Diana (027 478 8928), Gail (021 344 070), Maree (027 496 3006), Moira (027 498 9154), Sandi (027 318 4514). We are also on Facebook: www.facebook.com/groups/358928941269802. Love to have you join us.

Aqua Pre-tank Rainwater Filter

Prevent Dead Birds, Dead Rats, Dead Mice, Leaves and Litter getting into your drinking water.

Tank water full of dead mice, leaves, twigs, feathers, birds? Install an Aqua Filter (Pre-tank Rainwater Filter) One of a kind, pre-tank filtration unit on the market.

The Aqua-filter is a pre-tank filter that will stop leaves, feathers, birds, rats, mice etc from getting into your tank. The Aqua Filter filters out organic matter from your roof, spouting and



downpipes BEFORE it gets into your tank. Prolong tank cleans and the quality of water in your water supply.

Aqua Filters and extra water storage, do it all at once.

We have tanks ranging from 3,00L to 31,000L in 11 different colours. It's looking like a dry long hot summer with El Nino on its way. Ensure you have enough water storage to see you through the summer months. Water tanks, water pumps, borehole pumps, engine driven pumps. You need it, we got it.

Contact us today. KPL 09 412 9108 - 156 Main Road Kumeu. Big Blue Building www.kpl.co.nz or send us an email info@kpl.co.nz.

Kiwispan Kumeu

Here we have a sleek 15m x 15m farm shed.

No worries getting tractors or toys out of the weather with two 3.2h x 3.6w roller doors and 4.5h x 4.2w centre door

See our staff at 329 Main Road, Huapai or call 09 412 8455 to enquire.



ACT NOW!

El Nino is coming!

KPL

www.kpl.co.nz

Install a Roof Water Tank 300 - 31,000 Litre...

- ▶ Reduce water & waste water charges
- ▶ Use **Free** Rainwater
- ▶ Garden, Car, Boat, Home **Washing**
- ▶ W/C and **Hose Taps**

KPL

Kumeu 09 412 9108
 West Auck. 09 833 6300
 Helensville 09 420 9108
 Nth. Shore 09 444 1449

156G Main Road Kumeu / BIG BLUE BUILDING

set up for summer

Nouveau

Saigon Bistro Setting 3 Piece



SKU: 189636

\$ 99⁹⁹

Nouveau

Sirocco Outdoor Dining Setting 5 Piece



SKU: 371967

\$ 669

Nouveau

Lorca Outdoor Lounge & Dining Setting 5 Piece



SKU: 319516

\$ 1,399

Nouveau

Siena Outdoor Corner Lounge Setting 3 Piece



SKU: 335977

\$ 2,499

NEW PRODUCT

Nouveau

Montego Outdoor Park Bench



SKU: 371967

\$ 999

NEW PRODUCT

Nouveau

Deluxe Standing Egg Chair



\$ 899

SKU: 2001405

NEW PRODUCT

Weber

Weber Q Plus 2600N+ BBQ LPG Red



\$ 699

SKU: 2016385

NEW PRODUCT

Weber

Premium Cart for Q & Baby Q N Series Black



\$ 289

SKU: 2016565

NEW PRODUCT

Grilled

Buffalo 6 Burner BBQ - Black



\$ 999

SKU: 2000628

NEW PRODUCT

While stocks last, see in-store for full range.

**Big Range,
Low Price,
Local Advice.**

Mitre 10 MEGA Westgate & Henderson
Northside Drive & Lincoln Road
Monday to Sunday: 7am to 7pm



@ M10MEGAWestgate
@ M10MEGAHenderson

**MITRE 10
MEGA**

**WESTGATE &
HENDERSON**

Central's Tips

November 2023



The fruit and vegetable garden

- **Sow bean and basil seeds.** For best results beans will need a climbing frame to grow up. Basil grows well near tomato plants
- **Hang sticky traps** in apple and pear trees to stop an infestation of codling moth in the young fruit. Or, Spray with Yates' Success Ultra a maximum of four times during spring
- **Feed the fruit trees** that are forming fruit as their flowers drop – feijoas, citrus, pip and stone fruit trees need nourishment at this time of the year
- **In raised vegetable beds,** layer on pea straw work to protect young vegetable plants from drying out. An added advantage is that they help hold young plants in place. Place the mulch on top of well irrigated soil
- **Aphids** reproduce very quickly in warm weather and can savage growing vegetables. Hosing them, using a soap spray or wiping off with your hands are all good means of chemical-free control. They do not like marigolds, dill and coriander, so plant these around the edible garden

The ornamental garden

- **Hanging baskets are easy:** place a plastic saucer in the base of the basket to help hold water, fill with good potting mix and plant lots of summer flowering plants. Liquid feed after planting and hang in a sunny spot, watering and feeding regularly
- **Deadheading** of roses, hydrangeas, camellias and rhododendrons after flowering is good garden housework. In the case of roses and hydrangeas it encourages repeat flowering over the summer
- **Planting up pots for Christmas?** Start now with red petunias, salvia or impatiens that are easy to grow. For indoors red or white hippeastrum bulbs flower within six weeks generally
- **Planning a dry garden** to cope with low rainfall in summer? Add plenty of compost to your soil before selecting drought tolerant plants. A pebble mulch helps keep plant roots cool and looks attractive
- **Avoid a dry lawn this summer** by applying Prolawn Aqua Turf G this month. It helps the lawn to use all available water making it more resilient to the heat. Works for any late planting projects in the garden too

Project for November

We dig plants. Plants dig mulch.

After the year of rain on our gardens a dry, windy period is forecast to hit. Likely the soil won't be very friable, and the added moisture may increase the chances of cracked soil as it warms up. Mulch will aid soil remediation by protecting the top surface from heat offering a cool root run for plants to enjoy. Central Landscapes has plenty of different mulches to choose from....

To view the range of mulches available visit
<https://centrallandscapes.co.nz/collections/mulches-barks>





CENTRAL
LANDSCAPE SUPPLIES



Summer forecast: hot, dry and windy... keep your garden cool!

A well mulched garden will survive a hot summer. Our yard has over five different varieties of mulch, so there's one to keep your garden alive! Jump online or visit us to see the range.

Central Landscape Supplies Swanson
09 833 4093 • swanson@centrallandscapes.co.nz
Open 7 Days • 598 Swanson Rd, Swanson
www.centrallandscapes.co.nz



Pets

Pet Patch Dog Friendly Top Picks

Get ready for a fun-filled adventure as we explore the best dog-friendly spots around town. From serene parks to pet-friendly eateries, we're here to guide you on a journey of canine delights. So leash up your furry friend and join us as we discover some tail-wagging destinations. Together, we'll embark on a pet-approved exploration, making the most of your precious time with your loyal companion. Let's uncover the places that will make both you and your four-legged buddy smile from ear to ear.



Beer Spot - Huapai - Pop in to check out the latest beers on tap and yummy food truck, they even have some Dog beer for your Best Buddy

Kumeu Garden Hub - Huapai - Go for a stroll through the garden and pick up some beautiful flowers, gifts or plants to plant at home, your furry friend will love to have a sniff around and discover all the interesting smells (this is a great enrichment activity)

The Food Vault - Huapai - A fantastic spot for Breakfast or Lunch with the best Coffee (we would know as we frequent it weekly) dog friendly on the tables outdoors and peep the cute Pet Patch water bowl

Hive Bar and Restaurant - Kumeu - Enjoy a summer bevvy out on the deck where dogs are welcome! There are also tv's out in the deck so you can catch all the important sports games!

Blend NZ - Huapai - Come and enjoy a smoothie, smoothie bowl and a coffee indoors or outdoors at blend, dogs are welcome!

Just Jess Boujee Bakery - Huapai - Always happy to see the pups a

great spot to pick up a sweet treat for yourself and a Puppachino for your best mate

Hallertau Brewery - Riverhead - Dogs are welcome in the outside Garden Bar and what a spot to enjoy some of the finest Beer and Cider (We can personally highly recommend the Hallertau C and beef Krokets)

Bee keepers Wife - Riverhead - A great Brunch spot on the way back from a walk in the Riverhead forest that welcomes dogs on the outside tables

Muriwai Beach - Muriwai - A great spot to take your dogs for some fun at the beach just remember with the black sand it gets hot so its best to go early morning or in the evening, also its important to be mindful of the wildlife at the beach and keep both your best mate and the wildlife safe.

Huapai Domain - A great local spot to go for a walk around and have a play, with cricket and summer footy season upon us there's always something to see and new experiences to be had at the domain just remember this is an on leash area and don't forget to pick up your poo.

Plus of course Pet Patch! we welcome all animals in store and we love seeing your best mates when you come in!

all of these places above welcome dogs but ask that your dog is well behaved and on leash at these locations.

Pet Patch - 320 Main Road, Huapai - phone 09 412 2009, email info@petpatch.co.nz or visit www.petpatch.co.nz.

Cat lovers we need your help

The NZ Cat Foundation has a sanctuary based in Huapai which houses over 150 cats. We offer safe sanctuary for older, disadvantaged and un-homeable rescue cats where they can live out their lives in safety and comfort. We need regular volunteers to help with routine chores so our cats can



enjoy happy, healthy, safe lives. We are looking for volunteers who are mature, have a sense of responsibility, are good team players and dedicated animal lovers. Helping at the sanctuary is a popular way to fulfil community service hours for Duke of Edinburgh, St John's, Scouts, Guides, church, university, animal sciences studies, etc. We are happy to sign off on your hours and provide any needed verification of your service. We rely heavily on volunteers on a daily basis and desperately need more.

Financial and food donations are also urgently needed to cover vet and other costs associated with our sanctuary. The NZ Cat Foundation

Custom Engineering

- Steel fabrication
- Gates, fences, handrails
- Steel Brackets, steel furniture, artwork
- Farm equipment repairs
- Welding
- One offs designs

Call Glen 021 117 2954
or email glenruohonen@icloud.com



Pete Sinton
Managing Director

09 412 2016 | 021 637 772
49 Beach Street, RD 2, Sandspit, Auckland 0982

petesinton@townplanner.co.nz

Pets

also supports community Trap-Neuter-Return programmes and helps feed and care for many cats living in the community. Please visit our website for more information on volunteering and how to donate at www.thenzcatfoundation.org.nz. You can also email - volunteers: volunteer@thenzcatfoundation.org.nz donations: info@thenzcatfoundation.org.nz.

Importance of training your dog from the first day

What to do and what not to do.

Training your dog from the day you bring them home is crucial to help you build a harmonious and fulfilling relationship with your doggo.

Early training sets the foundation for a well-behaved and happy pet, benefiting both you and your canine companion.



The importance of early training lies in creating a strong bond, effective communication, and a safe environment.

It establishes a hierarchy within the family, and helps your new buddy understand their role and your expectations.

Consistent training cultivates obedience, makes it easier to manage and enjoy your dog. This includes basic commands, housebreaking, and socialisation. It teaches your furry friend how to interact with people and other animals.

The impact of not training your dog can be disruptive and even dangerous.

An untrained dog may engage in destructive behaviours, become aggressive, or exhibit anxiety. This can lead to damage to your property, strained relationships with neighbours, and, in extreme cases, legal issues.

Inadequate training can also put your pet's safety at risk, as they may not respond to commands in critical situations.

To ensure effective training, it's essential to use positive reinforcement techniques, such as treats and praise, to encourage desired behaviours.

Avoid harsh punishments or negative reinforcement, as they can lead to fear and aggression. Consistency, patience, and regular practice are key.

Seek professional guidance if needed and provide mental and physical stimulation to keep your dog engaged and happy.

Ultimately, training your dog from day one fosters a loving and well-

behaved pet, enriching your life and the life of your furry friend with companionship and a strong, positive connection.

Much love from all the team at K9 Heaven - Helping build better, happier, healthier dogs. www.k9heaven.co.nz.

Photo by Berkay Gumustekin on Unsplash.

Pet Patch pet of the month

Meet Penelope!

Penelope is a 8yr old a chocolate ragdoll cat that Jennifer adopted in June.

She has cattitude aplenty and is great company after she lost her old dog Obie earlier this year.

If you would like to be featured as next months Pet Patch Pet of the Month then please send your entries to info@petpatch.co.nz

(We need a photo and a little write up about your pet) if you get featured you will win a \$20 store voucher to spoil your pets with!



\$100 = Exposure for a month

Budgets are tight and advertising is often expensive, but it's nice to know that someone is making it easy and cost effective. For \$100 plus GST you can be exposed to over 20,000 locals for a whole month. That is only \$3.30 a day. For more information email our editor at editorial@kumeucourier.co.nz.



PET PATCH

Your Local Pet Store

320 Main RD Huapai

09 412 2009

www.petpatch.co.nz





Food & Beverage

Christmas parties at Good from Scratch

Well I can't quite believe we are already in November... and do you know what that means? Work and family events are just around the corner!

If you're looking for a beautiful venue this Christmas, reach out to us at Good from Scratch and let us know what you have in mind. From hands-on cooking classes to private supper events and cocktail/platter style evenings, we do it all.

We also have a budget friendly option for those smaller groups who'd like to visit us and don't mind more of a restaurant style evening. So get in touch!

If you'd like to hear more, drop us an email at info@goodfromscratch.co.nz and we'll organise a time to get in touch and discuss your event.

We'd love to help you organise your perfect visit.



Soljans open 7 days a week

As the sun graces us with its warm embrace, Soljans Estate Winery is thrilled to be back open 7 days a week, just in time for the glorious summer season.



Join us for a memorable journey through our vineyards, indulge in

Free half-round barn on removal in Riverhead.

View by appointment only.

If not removed by 20 November 2023, we will remove it ourselves.

Contact me as soon as you can.

Herman: 021 089 88946.



the finest wines in our cellar door, and savour the flavours of the season with our delectable cuisine in our Bistro. Our doors are wide open to welcome you every day, whether it's a leisurely weekday escape or a weekend retreat, we invite you to make the most of the sunny days at Soljans. Walk-ins are welcome, but we do recommend booking in advance.

Booking online or by calling 09 412 5858

Come. Sip. Enjoy.

A new chapter for Butter Baby

Sleek, industrial Butter Baby HQ opens its doors for takeaway in West Auckland.

Saturday 30th September 2023 - Brioche donut, Cinny bun and cookie darlings, Butter Baby are thrilled to announce the official opening of their new flagship kitchen and very first shop at Unit 70, 11 Northside Drive in Westgate, West Auckland.



Baked Best Out West - The new store is based on a takeaway concept where customers can order a cup of coffee from Wellington based, Flight coffee alongside a full range of Butter Baby's brioche donuts that will rotate on a fortnightly basis. The takeaway menu will also feature cinnamon buns, their OG cookies and the brand's best-selling Pandan and Ube cake slices.

Founder and Baker, Matilda Lee shares her excitement, 'West Auckland has a special place in my heart. It is where I grew up and that was where we 'Westies' used to say everything was 'best out west'. With the rapid growth and development of the Westgate area over the last three years, I am excited to be a part of its exciting food scene and to provide a culinary experience that introduces nostalgic new flavours with a contemporary twist.'

Growing Into The Demand - Butter Baby began as an experiment in her parent's Henderson home kitchen, where Matilda shares she was using mum's pots, utensils and oven to produce about 20 donuts for her very first weekend market pop-up store.

Soon she found herself selling donuts at two to three different markets each week with demand growing to 300 donuts and various other goodies. At that point she realised the need to expand into a full kitchen. Her new kitchen and shop known as the new 'Butter Baby HQ' will allow her to produce double or triple the number of goodies for not just the markets, but also to cater to customers who want to order for walk in takeaways, events and special occasions.



FreshChoice Waimauku
A-2 Waimauku Retail Centre
5-19 Factory Road
Waimauku, Auckland
Phone: (09) 411 7890/411 9495
Fax: (09) 411 8050
Mobile: 021 048 3355
Email: waimauku.fc@xtra.co.nz

Food & Beverage

Sugar and Steel Come Together - Working collaboratively with up and coming interior designers, 'Studio We Are Young' and Brave Construction who project managed everything, a relatively compact space of 72 square metres was efficiently maximised resulting in a concept kitchen with an edgy simplicity and an industrial feel.

The shop's design features an open studio floor plan with two levels. The upstairs loft serves as an admin office whilst the ground level houses a compact cold room where all the baked goods are stored and a fully equipped industrial kitchen.

In the middle of the kitchen is a sleek 4-metre-long stainless steel benchtop that doubles as a work-bench, coffee counter and daily display where daily patisserie favourites are showcased.

A small bench with limited seating allows customers waiting for their goodies to be packed to enjoy a takeaway coffee.

Bringing a pop of colour into the stainless-steel surrounds, is a burnt butter orange light feature that stretches through the front to the back of the kitchen illuminating and highlighting the bench space below.

The Butter Baby logo is also unmissable. The red, orange and white logo features boldly on their roll-up garage door entrance and on their delivery van, parked just outside the premises.

What's On The Menu - A daily menu of brioche donuts featuring Kiwi favourites like the traditional Boston Cream, Raspberry & Cream and popular Singapore heritage flavours like Pandan & Sago and Filipino Ube will be staples, with a new menu introduced every fortnight.

There will also be a selection of cinnamon buns, cookies (OG Choc Chip, Salted caramel coconut, birthday cake), Pandan and Ube cake slices alongside the occasional selection of local Singaporean sweet or savoury steamed cakes known as 'kuehs'.

About Butter Baby - Butter Baby is a small artisan home bakery that first debuted in June 2021 at several weekend markets. Over the last two years, it has developed a following for its signature sell-out Cinnu Bun Brioche Doughnuts, (Original Gangster) Chocolate Chip Cookie, Ube Kaya Cake and Pandan Kaya Cake. In September 2023, Butter Baby opened its first flagship kitchen and shop located at Unit 70, 11 Northside Drive in Westgate, West Auckland. Founder, Head Butter Babe and Baker, Matilda Lee is a hospitality and food photographer with a degree in Culinary Arts and her dream is to add a contemporary twist to old school comfort foods, having customers celebrate friendships and share memorable moments whilst bonding over new flavours or something as simple as a chocolate chip cookie.

Butter Baby HQ is located at Unit 70, 11 Northside Drive in Westgate, Auckland. Open from Thursday to Saturday from 8am to 1pm. Store contact number: 021 081 21914, email: info@butterbaby.co.nz, www.butterbaby.co.nz.

"How you feel through the relationship adds incredible value"



I've been making a real and tangible difference in peoples lives in real estate for over 17 years.

Graham McIntyre AREINZ

Licensed REAA2008

0800 900 700

027 632 0421

Come and check out our new
Delicatessen, Coffee, Juice & Ice Cream Bar

BORIĆ Food Market

1404 Coatesville - Riverhead Highway, Auckland
www.boricfoodmarket.co.nz



Mike Pero | REAL ESTATE

Health & Beauty

Beautiful & healthy smile for life

Protect & Prevent - The great news is people nowadays are living longer, with the average life expectancy extending well into their nineties. Living in 2023 also means that we expect a far better lifestyle than aged people have typically enjoyed in the past, and therefore dentures are no longer the desired option.



What must be emphasised is oral health is closely related to your general health. Your mouth changes as you age. As you get older you need to take extra precautions and make your visits to the dentist more regular just like you do with the doctors.

Regular maintenance visits will prevent and protect your teeth and help you keep your teeth for life. Luckily, dentistry has evolved and here at Kumeu Dental we can now offer durable, long-term sealants giving protection for high risk exposed roots, as well as other options like implants, bridges and crowns where the structure of the tooth has already been compromised.

Call Kumeu Dental on 09 412 9507 and ask how we can help you maintain your beautiful smile for life. Follow us on Instagram @kumeudentalsurgery & Facebook to see our SPRING SPECIALS.

PWR FIT Studios

PWR FIT Studios was born in the heart of Kumeu in 2017, from my garage. What started as a personal training studio to train my clients has now turned into my dream fitness and wellness studio. We run classes designed by fitness professionals to ensure all of our clients get results and receive the care they need every workout! With a variety of strength and fitness classes, including Pilates, boxing, and stretch and flow classes, we offer various sessions every week to ensure our community incorporates regular exercise as an important part of their lives. Only 8% of New Zealanders have a regular fitness routine, something I am passionate about changing. With our health system under immense pressure, it's up to us to ensure we stay healthy, fit, and strong, so



**PWR
FIT STUDIOS**

www.pwrfitstudios.com
@pwrfit_studios

Experience a fitness studio like no other!
With group fitness structured like a PT session, you will see results with your health and fitness when you do our classes.
All levels, ages and abilities welcome!

SIGN UP TO OUR 2 WEEK TRIAL

Scan the QR code below

250b Main Road Kumeu

we don't need to make as many trips to the doctors for preventable issues that can be managed through regular exercise and strength training.

Years of research show that strength training and regular exercise are not just about weight loss; in fact, weight loss constitutes only a small percentage of regular training, which is why we should engage in it weekly. It's about LONGEVITY - preventing heart disease, arthritis, osteoporosis, reducing the risk of injuries, alleviating back pain, promoting healthier joints and bones, and building lean body mass to support your body in your day-to-day life. Exercise needs to be a regular occurrence in your life, just like brushing your teeth. At PWR FIT, we have created a group fitness structure and programme to ensure everyone receives the training they need to live a healthier life overall. If you want to be a part of a health and wellness community that cares about you, come and see us at the studio or join our online community today. We have a range of classes waiting for you to be a part of, personal training sessions and nutrition coaching.

Renee Diment - Founder of PWR FIT STUDIOS - 027 363 3392, pwrfitstudios@gmail.com or www.pwrfitstudios.com

The power of effective physiotherapy for neck pain

Neck pain is a common complaint that can significantly impact our lives. Whether it's caused by poor posture, muscle strain, or underlying conditions, seeking effective treatment is crucial for relieving discomfort and regaining mobility.



Physiotherapy offers a holistic approach to addressing the root causes of neck pain, providing long-lasting relief. In this blog, we will explore the benefits of physiotherapy and two research-backed treatment approaches to alleviate neck pain.

A study conducted by Gross et al. (2015) found that exercise therapy is effective in reducing neck pain and improving physical function. The study involved a combination of stretching and strengthening exercises tailored to each patient's needs. Physiotherapists can guide patients through these exercises, targeting specific muscle groups to improve flexibility, strengthen the neck, and reduce pain.

In a study by Jull et al. (2019), researchers investigated the effectiveness of manual therapy for individuals with chronic neck pain. The study concluded that manual therapy, such as joint mobilisation and manipulation, significantly reduced pain intensity and improved cervical range of motion. Physiotherapists skilled in

Clarkson
Air Conditioning

- HEAT PUMPS & AIR CONDITIONING
- DUCTED & HOME VENTILATION SYSTEMS
- SERVICING & REPAIR
- FREE ASSESSMENT & QUOTE

Office 09 912 0553,
admin@clarksonaircon.co.nz,
www.clarksonaircon.co.nz

Health & Beauty

manual therapy techniques can use these approaches to provide targeted relief and improve overall neck function.

Physiotherapy offers a range of treatments to address neck pain, including:

1. Manual Therapy: Skilled manipulation and mobilisation techniques to restore joint mobility and reduce pain.
2. Exercise Therapy: Tailored stretching and strengthening exercises to improve muscle flexibility and stability.
3. Posture Correction: Identification and correction of poor posture habits to relieve strain on the neck and spine.
4. Ergonomic Education: Guidance on proper ergonomics at workstations and during daily activities to minimize strain on the neck.
5. Pain Management Techniques: Application of heat, cold, or electrical stimulation to alleviate pain and promote healing.

If you're experiencing neck pain and seeking professional physiotherapy treatment, contact NorthWest Physio + on 09 412 2945 or visit www.northwestphysioplus.co.nz.

What makes Maui Jim sunglasses so special?

We love them for many reasons, but three things that set them apart from all the rest are:

1. Patented technological advances

Maui Jim sunglasses allow you to see colour in ways you have never seen before, thanks to their patented PolarizedPlus2 technology. Their unique formula of digital polarisation enhances colour in bright conditions, leaving you with a crisper and more vibrant visual world. Not only is their polarisation top of the line, but Maui Jim shades also offer the best possible visual acuity in their impact resistant, scratch proof, and smudge proof lenses. Maui Jim sunglasses are available in plano, single vision, or progressive prescriptions and their fully-compensated digital optics are accurate and efficient.

2. Unique protection

PolarisedPlus2 is the ultimate in eyewear protection: it wipes out glare, 100% of harmful UV rays, and protects against harmful blue-light. Four different lens colours allow you to choose which suit your eyes best to maximise clarity of vision even during dangerously



Take Your Eyes to For Eyes!

- Advanced scanning equipment for early detection of cataract, glaucoma and macular degeneration
- Specialty assessment of child and adult reading difficulties
- Specific-tint lenses for Irlen Syndrome
- Lenses to correct red-green colour-blindness



Phone: 09 412 8172
email: foreyes@foreyes.nz
website: www.foreyes.net.nz

Matthew and Molly Whittington, optometrists in the Kumeu Village since 1993
Open 9-5 weekdays, Kumeu Village, 90 SH16 Kumeu

bright conditions. Wet roads, glaring cloud-cover, or on the water - no other sunglasses can offer this kind of protection from the sun's harmful rays.

3. The joyful spirit of the company

We love that Maui Jim is an internationally renowned company with the attitude of a small business. Although they are available in 45 countries, with 15 distribution centres all over the world, they continue to be based out of Lahaina, Maui. Maui Jim's legendary customer service support us to replace your temples, nose pads, screws, and springs forever at no charge, and they come with not only a prescription warranty, but a 1 year scratch warranty, and a two year manufacturers' warranty.

The best recommendation of all is the customer loyalty to this brand; Maui Jim wearers repeat-buy them because the vision, comfort and clarity of colour are so good.

Try a pair for yourself. Anna, Matt and Molly at For Eyes in the Kumeu Shopping Village would love to see you.

Riverhead Physiotherapy

Our brand new fully refurbished practice is found in the village community of Riverhead, across the road from the Riverhead Triangle Reserve. Come and visit us in our newly refurbished premises.

We also have a clinic in Hobsonville if that is more local to you.

Our mission is to empower our clients to get the most out of life by being active without their bodies holding them back.



- Fully Equipped Gym
- Designated Cardio Area
- Group Fitness Classes
- Smart Training
- Personal Training
- Indoor Netball
- Supplement Shop



Providing fitness in Kumeu for 30 years

Ph. 412 8932 | www.kumeugym.co.nz

Health & Beauty

With the use of the best physiotherapy & acupuncture techniques and client education, we strive to reduce or eliminate the pain from musculoskeletal injuries.

We also offer 20 hours of Pilates reformer classes a week these classes are for everyone from complete beginner to expert we can tailor to your individual needs

Our philosophy is to treat everyone as individuals and shape their rehab fittingly. We work in alignment with other medical professionals to ensure the best rehabilitation from your injury possible.

Riverhead Physiotherapy is a BSI-accredited Physiotherapy Clinic meeting the highest standards in safety and quality. Our ongoing commitment to learning ensures our customers receive the best care in the best environment. So don't delay and book your consult or class today. www.riverheadphysio.co.nz - 027 313 6036, 1058 Coatesville-Riverhead Highway, Riverhead.

Massey Unichem Pharmacy

Riddle: What can energise you AND help you relax and sleep?

Answer: Magnesium

Your body need magnesium to create energy (in the form of ATP). Ironically, magnesium will also help relax muscles and improve sleep. Plus, sleeping well is important to waking up fresh and energised. But not just any old magnesium will do. You need to get the right magnesium for your own specific health needs. Given that magnesium is deficient in our soils, and therefore our food, it is important that we consider an appropriate magnesium supplement.

For those wanting to boost energy:

Magnesium has been used to improve athletic performance as it is actively involved in the conversion of glucose into energy. Some studies have shown an improvement in the ability to do prolonged exercise by 50%. That's a big improvement.

But it's not just the athletes that need it. People with Chronic Fatigue Syndrome or lethargy can benefit from taking an appropriate magnesium to boost energy.

For those trying to Calm the Farm:

Magnesium is protective for our brains. In times of stress, our magnesium levels drop, especially in the brain. High alcohol consumption also lowers magnesium levels. For this reason, it is not a good idea to use alcohol as a coping mechanism for stress.

Once your levels of magnesium drop, then your brain is more sensitive to stress or injury. Brain neurons actually shrink if there is not enough magnesium. Supplemental magnesium has been shown to help many patients including those with migraines (especially menstrual migraines), anxiety and panic attacks, depression, irritability, nerve pain, epilepsy, ADHD, and is a great option for children. In fact, magnesium deficiency is commonly found in patients with these conditions.

Taking supplements of magnesium can raise the levels of magnesium in your cells and increase the resilience of your brain. It is important to get the right type of magnesium. Some types do not get absorbed very well and can cause diarrhoea. If you take medicines like omeprazole to lower stomach acid, absorbing magnesium becomes more difficult. Special forms of magnesium will be required if you are on an acid-lowering medicine.

Pop in for a chat with the team at Massey Unichem Pharmacy about your health needs and we can recommend an appropriate magnesium for you. While magnesium is important for everyone, choosing the right supplement is not a "one-size-fits-all" approach.

Ask Dr Heather

A friend asked me the other day, why is sunscreen so important? With the upcoming long hot summer El Nino is expected to deliver (wahoo!), it got me thinking. Why do we bang on about sunscreen? It must seem like sunscreen companies are sponsoring us to (they aren't).

It all comes down to science. When the sun stuns us with her rays, she emits Ultraviolet Radiation (UV). There are different types of UV, the main ones that affect us are UVA and UVB. The energy they carry penetrates our skin and cooks us in a similar way to how a microwave heats up our dinner.

Limited amounts of cooking (up to 15 minutes or so) are good for our tissues as it stimulates beneficial pathways in our body such



DT DENTURE CLINIC
DENTURE SERVICES AND REPAIRS

Attention Denture Wearers
Expert Treatment,
Individual Needs

We offer:

- Full Dentures
- Partial Dentures
- Same Day Relines, Repairs and Tooth Additions
- Mouthguards
- WINZ Quotes

Make a booking to discuss your FREE treatment plan.

67 Brigham Creek Road,
Whenuapai
www.dtdentureclinic.co.nz
P: (09) 416 5072

Made in NZ with imported materials

ALLOR

COSMETIC MEDICINE

Dr. Heather Anderson
0222626762
enquiries@allor.co.nz

72 Waimarie Rd
Whenuapai
www.allor.co.nz

Health & Beauty

as the production of Vitamin D, good for anti-ageing, bone and immune system maintenance.

Too much of a good thing causes changes in our skin including altered pigmentation (spots), damaged collagen and dysfunctional deposits of elastin leading to wrinkles. Pigmented lesions/spots can also be triggered to mutate, leading to formation of cancer cells and the dreaded melanoma.

Sunscreen protects us from this radiation, broad spectrum the preferred choice to combat UVA (penetrates deeper and through glass, causing us to tan) and UVB (penetrates less deep and causes us to burn). Using this every day (even in winter and when its cloudy) helps prevent and treat these changes.

Like the necessity of wearing clothes, sunscreen should be part of the wardrobe. To be worn every day, except when the curtains are drawn and one is hiding inside.

Dr Heather Anderson is a Cosmetic Medicine and Urgent Care Doctor who practises in her own clinic at ALLOR Cosmetic Medicine in Whenuapai. If you have a question for Dr Heather you'd like answered anonymously in the magazine, please email askdrheather@allor.co.nz

Rife Frequency sessions

Have you ever heard of Rife Frequency or Rife Treatment? Do not worry if you have not, you are not on your own here. Let's take a look at what it is and its history, this will give you an understanding of what it is all about. In the 1920- 30's, the Rife machine or as it was known, Rife frequency generator was developed by an American scientist and inventor Dr Royal Raymond Rife. Dr Rife, went out to prove that each microbe has its own frequency that it resonates with and with the right light frequency that any virus or bacteria could be killed. How Dr Rife saw it was that when the light frequency travelled to the virus or bacteria at an intense rate it would explode or shrivel up and thus be destroyed. A simple explanation of this, I recently came across is that it's similar to that of an opera singing and by reaching the right tone, it could make a glass break. Due to every microbe having its own unique frequency, it would not affect any healthy cells or microbes.

There had been a number of reports during the 1930's of the significance of his discoveries and the great success it had in curing various diseases, however it was met with opposition from



the American Medical Association from the 1930's onwards and during the 1960's his research was banned and his equipment was destroyed. However, around the mid 1980's, after the book "The Cancer Cure that Worked! - Fifty Years of Suppression" by Barry Lynes was published, interest in the Rife started back up.

Today, Astramana™ Healing Services uses the Alixxor Rife Machine for treatments. This is a New Zealand made product. The Alixxor Rife machine has about 1 million frequencies (0-10,000 Hz). It delivers the frequencies in a safe steady or pulse mode. Generally, a treatment can last from about 20 minutes up to an hour. Each condition treated uses different frequencies, which may mean several different ones occur during the treatment. The client will either hold 2 prongs or use a foot plate. The frequencies can be used for balancing chakras, various day to day conditions, wellness etc. I currently use mine for balance, onset of colds, flu symptoms, asthma etc.

It is important to remember any treatment including Rife sessions provided by Astramana™ Healing Services does not replace any treatments provided by your licensed medical provider, nor do we claim to cure any illness or disease. We are happy to work with your medical provider or specialist.

Astramana™ Healing Services, was founded by International Reiki Master-Teacher and Hypnotist Jason Mackenzie. Mobile Rife sessions are now available. Anyone interested in purchasing an Alixxor Rife machine, we are able to assist you please contact us via email to book an appointment or for purchasing information. Visit our website: www.astramana.com, contact us on 021 027 70836 or email astramana@gmail.com with any questions.

Get set for summer with Westgate Optometrists

Sunglasses are a great fashion accessory, but their most important job is to protect your eyes from the sun's ultraviolet rays. Westgate Optometrists have a wide range of contemporary sunglasses with brands inclusive of Kate Sylvester, Nina Ricci, Furla, O'Neill, William Morris, Barkers and more - all can be paired with our polarised prescription lenses for single vision and progressive lens wearers. Purchase any complete pair of glasses and receive 50% off your second frame! Stop by to check out our range and have a chat to our friendly team. Opposite NorthWest Shopping Centre and the Kiwibank, just around the corner from Goode Brothers Restaurant. Phone: 09 831 0202 Website: www.westopt.nz



Helping
New Zealanders
do more

We offer personal and business lending for almost anything you might need, whether it's that new vehicle for the family, a ute for the business or even a jetski for the warmer months!

Offer of finance is subject to terms, conditions, lending criteria, responsible lending inquiries and checks. See mtf.co.nz/terms for details.

Talk to Gerrie and the team today.

☎ 09 399 2478
📍 82A Main Road
✉ kumeu@mtf.co.nz
mtf.co.nz/kumeu

mtf finance
KUMEU



Area Columnists

Floundering over finances?

Financial difficulties often leave clients floundering before they come to Citizens Advice Bureau Helensville.

However, empowerment is at hand with free budget advice available with trained and empathetic volunteers.

"Sometimes it's just about having a listening ear first and foremost as we can provide the light at the end of the tunnel or different paths with options they've never considered," says Rani Timoti, manager.

Issues could be directly related to mounting debt from a lack of income, loss/reduction of employment or credit card overspending to missed payments for rent, tax and the "growing scourge" of afterpay.

And of course there's the worrying surprises of unexpected bills and life's events, not meeting ends meet or finances being a part of a package of problems people are going through.

Nationally, the CAB national office gets over 8000 enquiries each year relating to general financial difficulties or budgeting.

"Our volunteers understand, as we all experience or know family and friends who have gone through these trials, that our clients may be embarrassed, stressed, worried, angry and vulnerable," says Rani.

Volunteers provide active listening skills, are not judgmental and confidential in their delivery of service. Clients are empowered and sometimes asked to write a timeline of events leading to their issues or given a budget worksheet.

Although referrals to the Budget Service or budgeting advisors are



a main point of contact, volunteers can offer other suggestions-asking clients if they've spoken to their bank if they have a mortgage, approaching WINZ if they have rent arrears or asking family or friends to help with an interest free or low interest loan to clear debt.

As the festive season approaches it may be timely to prepare finances so families are not starting the year with major debt.

Budgeting burdens can be lifted by booking our budget advisor by appointment on Tuesdays, 10am to noon.

Chris Penk MP

Elton John once sang that "sorry seems to be the hardest word". That may be so but I certainly know that the easier to utter must be "thanks".

As the dust settles on the recent general election, I am feeling very grateful for a number of things.

First, we live in a country where free and fair elections are able to be held. Even on occasions when each of our respective political parties and candidates are unsuccessful (and my side was spectacularly unsuccessful overall as recently as 2020) it's heartening to see that in this country we still have a culture whereby the democratic will of the people is respected. Citizens of some other nations are not so lucky.

Second, I am grateful for the support that many people in this electorate have shown me personally through voting for me as a candidate recently. Naturally I am available to serve everyone in the community, regardless of who they may have voted for.

I also want to acknowledge the other candidates who put themselves forward so that we could have that conversation and a choice at the ballot box. I would welcome the opportunity to work with each of them (or continue working with them, in the case of those who are on the Rodney Local Board) in the years ahead.

Next, naturally I am also keen to express appreciation for the strong party vote result for the blue team across the country. At time of writing, we don't know exactly what the new government will look like, pending special votes being tallied and any coalition negotiations.

Whatever may eventuate, I am certain that we have a stable government that works in the interests of all New Zealanders. Certainly this nation deserves no less.

Finally, I would like to record my thanks to the local groups (for example, Kumeu Community Action) who arranged meetings at which members of the public could grill candidates on policy positions.

For now, take care and thanks again to everyone reading this

ECHO
DRAINAGE
LTD

Doug Graham
REGISTERED DRAINLAYER
Telephone 021 416 420

78 Puriri Road, Whenuapai, Auckland 0618

Done Right. First Time. Guaranteed

ECHO Providing a quality professional
DRAINAGE service in Drainage to the
entire Auckland region

- Commercial Drainage • Domestic Drainage • Septic Tanks
 - Basement Leaks • Waterproofing • Hydro Jetting
 - CCTV Camera (fault finding/locating) • Earthworks
 - Tip Sites • Digger Hire • Tip Truck Hire

Watercare
An Auckland Council Organisation
WATERCARE APPROVED

WWW.ECHODRAINAGE.CO.NZ



FOR ALL YOUR

**PLUMBING &
GASFITTING**

CONTACT US ON

0800 DAN TAYLOR

021 254 3899

admin@dtplumb.co.nz

Area Columnists

column. I look forward to seeing you around northwest Auckland as your local MP again, for the next three years at least. Cheers, Chris Penk.

Christmas Book Fair

2nd & 3rd December 2023 - Helensville A&P Showgrounds

The Lions Club of Helensville will be holding their Christmas Book Fair at the Helensville A&P Association Showgrounds on the weekend of the 2nd and 3rd of December, opening at 9.00am on Saturday until 4.00pm and again on Sunday 10.00am until 3.00pm. As this is a community event entry is free, and we do not allow traders in before you, our community.



Our last Book Fair held in May raised \$11,823 from the sale of books, for which many thanks. All the money raised went towards helping individuals and organisations in the community that required assistance. The funds raised from this Book Fair will go towards the sculpture by Jeff Tomson being planned for the entrance to the town. A mockup and information on this project will be on display at the Book Fair.

All books are priced to sell, with nothing over \$2. There is a large selection of children's books, still at 50c. There are also many jigsaw puzzles, board games, DVDs, CDs, and quality magazines available. Non-Fiction will be split into twenty separate categories, including one section dedicated to New Zealand subjects, which is still our largest section. Of interest is a new section for music. A large amount of sheet music, scores, criticism and biographies of composers and performers has come to hand. There is also plenty of general non-fiction which you can spend hours browsing through.

Fiction is arranged alphabetically by authors, with six special interest groups, the largest of which is the fantasy/science fiction section. There are also many Children's and YA's books.

Small donations of books can be left at Burmester Realty, Helensville, or for larger lots, call Chris on 09 420 8527, or any other member of the Helensville Lions.

Please note that the last date we are accepting books for this Book Fair is Friday 24th November.

Helensville Te Awaroa Museum and the Aotearoa history

One of the highlights of 2023 at Helensville Te Awaroa Museum was a series of well-received talks on Aotearoa's history, given by Arina Bosch and her mother Leigh, the organisation's President. Motivated by changes to the NCEA social studies classes curriculum (for students in Year 1 to Year 10), the talks were titled Polynesian Migration, Becoming Māori, Tribal Society, First Contacts with Europeans, Kaipara's History and Matariki. "The idea of the talks was to do a sweeping overview from Pacific migration up to immediately before the Treaty with the hope of raising some of the achievements and events that are sometimes overlooked," Arina explained.



Arina was keen to help expand the conversation around New Zealand history by challenging received wisdoms, "There's a lot happening around elevating our histories and I wanted to contribute to that. I think many of us who whakapapa to Ngāti Whātua have been inspired by the mahi of the Pihema, Kapea, Wikiriwhi and Skipper whānau to name a few, who have shown tireless dedication to reinvigorating our language and stories and artforms. It's made us all want to contribute in whatever small ways we can."

Arina says the curriculum change was asked for by a NZ History Teachers Association petition. "It was about creating a push towards enforceable inclusion of more of our own history, not to the exclusion



Chris Penk
MP for Kaipara ki Mahurangi

Your local MP

Thank you for your support

A | 134 Main Road, Kumeu 0810

P | 09 412 2496

Funded by the Parliamentary Service. Authorised by Chris Penk, 134 Main Road, Kumeu 0810.



Area Columnists

of other things, but it would be guaranteed a place." Bringing teachers up to speed has included training seminars, feedback loops and conference days. "The underlying message is that history is constructed and contested - it's the story of what happened, and it looks different through different lenses. It's a case of treading lightly, there's not an intention to reframe any narrative as the 'right' one. It is more to elevate the conversation. History should stand up against rigorous debate."

The talks at the Helensville Te Awaroa Museum were designed to help schools resource this new curriculum area and feedback so far has been extremely positive.

A critical examination of Kumeu's development plans

Pictured above, part of the future Kumeu team present at the hearings in Waimauku over October.



In the heart of Kumeu, a community stands at a crossroads, facing a proposed transformation that promises connectivity but raises questions about its necessity, impact, and community input. Future-Kumeu, a community group actively engaged in shaping the destiny of their town, has raised concerns about the development plans facilitated by Supporting Growth and Waka Kotahi. As the community grapples with the future of a rail, bus, bike, and walking corridor stretching from Westgate to Kumeū, it becomes imperative to scrutinise the planning process, community involvement, and the proposed benefits.

The journey began in 2018 when Supporting Growth initiated discussions with the Local Board, positioning them as a key stakeholder in the development of a transport corridor. However, the disconnect between the stakeholders and the wider community soon became apparent. Limited discussions took place with the communities directly impacted, and a notable absence of a comprehensive cost-benefit analysis left crucial questions unanswered.

A particular bone of contention lies in the attempt to introduce a commuter train, an effort that saw minimal support from a mere handful of commuters. The public bus system, operating with a loose schedule through Kumeu, has failed to capture widespread public interest. From a practical standpoint, it seems like a solution tailored for a future that may or may not manifest in the next 40

years, catering primarily to schoolchildren and a select group of commuters unswayed by an unreliable bus timetable.

Supporting Growth's engagement with the community, as reported by Future-Kumeu, raises eyebrows. The purported outreach campaign consisted of a direct mail and limited advertising, eliciting a paltry 11 email responses and 48 survey responses over three months. Concerns arise about the independence of the survey questions, with suspicions that they may have subtly swayed respondents towards the desired outcome. Notably, a majority expressed a preference for a park and ride solution, a sentiment rejected by Supporting Growth in favor of a vision aligned with the future urban form of Kumeu Town Centre.

With a population of over 6,000 people affected by the proposed changes, the engagement rate stands at a mere 1%, with only 75% of the feedback deemed positive. These statistics underscore the need for a more robust and inclusive approach to community involvement in shaping the town's future.

Future-Kumeu's dissenting voice has been consistent, citing several reasons why the project, in its current form, is untenable. The concerns range from the long-term impacts of multiple flooding events to a lack of funding and a dearth of significant consultation with the community. The absence of a demonstrated community need and a predetermined 50-year plan further compound the skepticism surrounding the project.

In September 2022, Future-Kumeu organised a meeting attended by over 200 locals, dwarfing the engagement achieved by Supporting Growth. This resounding community feedback clearly conveyed that the majority did not support the positions of Waka Kotahi and Supporting Growth.

As the debate rages on, it is crucial to address the concerns raised by Future-Kumeu. The lack of clarity in the Notice of Requirement (NoR) documentation and evidence presented by Supporting Growth poses an unnecessary constraint on landowners in the Kumeu-Huapai area. The economic viability of businesses is called into question, both pre and post-construction, indicating potential fallout that needs careful consideration.

Craig Walker, a proponent of SGA's involvement in the development process, highlights the need for joint public/private infrastructure initiatives. This collaboration, he argues, should extend to the development of the Kumeu-Huapai Structure Plan and the necessary Plan Changes to the Auckland Unitary Plan (Operative in Part). While acknowledging the separation of processes, he advocates for a side agreement with SGA to ensure their intentions align with the broader community interests.

The concerns raised to date regarding the inadequacies of hydraulic flood modeling add another layer of complexity to the project. Future investigations into flooding effects downstream and the design of mitigation solutions become imperative, especially

EARTH MOVING CONTRACTOR

BOLER

CONSTRUCTION LTD



Driveways, All Drainage, Site Cuts,
Property Maintenance, Subdivisions,
Horse Arenas, Footings & Drilling,
All earth work requirements.
Laser Equipped.

Steve ^{PH} 0274 971 154
A/H : 411 7177
E: bolerconstruction@xtra.co.nz
www.bolerconstruction.co.nz
Reg Drainlayer: Over 20 yrs Experience



Henderson
Reeves

creating smart legal solutions

Property • Disputes • Family • Wills

Taina Henderson

Shelley Funnell

Amie Wallwork

027 537 9222

027 537 9221

021 421 336

www.hendersonreeves.co.nz

Area Columnists

considering the proposed development's potential impact on stormwater runoff and flooding.

In proposing a way forward, Walker suggests an all-encompassing concept plan that considers the floodplain, allowing for the northwest of Auckland to grow organically. This approach, he argues, would prevent a predetermined roading design from dictating the region's future development. It is a call for a more thoughtful and integrated approach that places the community's well-being and long-term sustainability at the forefront.

In conclusion, Future-Kumeu's plea to withdraw the Notice of Requirements is not merely a rejection of change but a call for a more inclusive, well-researched, and community-centric approach. As the community grapples with the prospect of a transformed Kumeū, it is essential to heed the voices calling for a reassessment of the project. The Auckland Council's definition of the Town Centre Plan and a thorough understanding of Kumeū's future needs should guide the way forward. Until then, Future-Kumeu advocates for a democratic system that safeguards the rights of property owners and ensures that any development aligns with the community's aspirations. In this critical juncture, the destiny of Kumeū hangs in the balance, and it is up to the community, stakeholders, and decision-makers to navigate a path that ensures a sustainable, inclusive, and thriving future.

Armistice Day 2023

The Kaipara Memorial RSA will be commemorating Armistice Day at the Helensville War Memorial Hall Cenotaph this year, as the Kaipatiki Reserve is closed for earthworks. It goes without saying that it will be held at 1100 hours on Saturday the 11th of November, 105 years after the Armistice was signed to "End the war of all wars", World War One.

Veterans, RSA members and the public are encouraged to attend. Medals should be worn, if wearing relative's medals, wear them on your right chest and wear them with pride. If there are any organisations or individuals wanting to lay a wreath, please email kaipararsa@xtra.co.nz before the 10th of November. (Sorry, wreaths are your care).

KMRSA clubroom update - The Kaipara Memorial RSA remains closed for seismic strengthening works and building upgrades, President Rex Keane says that a date for re-opening is not known at present, but likely to be in the New Year. Whilst a 12 month closure is far from ideal, our veterans who have gone before us endured far greater suffering, so we shouldn't sweat the small stuff. Rex says that when the clubrooms re-open they will be much improved and a great community asset for the next generation to enjoy. The committee is also looking forward to reconnecting with our Veteran and Associate members, which will help the mental wellbeing of

everyone.

In the meantime the RSA committee has continued with our primary tasks of Veteran's welfare and commemorations in 2023, including ANZAC Day, Vietnam Veterans Day and Armistice Day. The committee has also been actively involved with the building upgrade, meeting and liaising with the Council and their contractors to ensure the clubrooms are future proofed and that the ambience, décor and acoustics in the clubrooms are all improved.

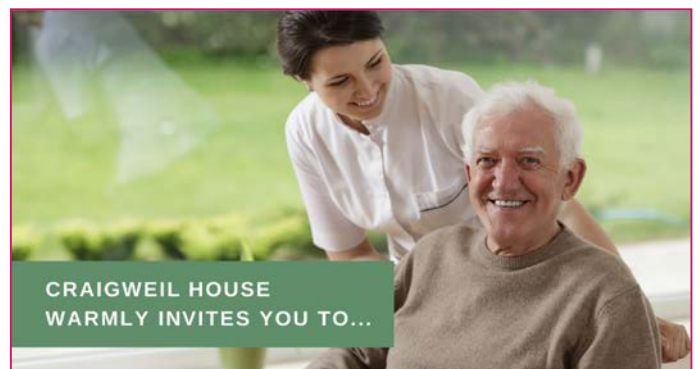
Kumeu Library

November brings Diwali celebrations to Kumeu Library. We'll be celebrating in several different ways: with Storytimes, displays, and a special Diwali scavenger hunt - keep an eye on our Facebook page for full details of what is happening. We'll be highlighting Indian authors, travel books, cookbooks and more.

Kumeu Library's new Brainfit sessions for adults are up and running and proving to be a lot of fun. Give your brain a weekly workout with a variety of challenges and thought-provoking puzzles and problems. Sessions are held at Kumeu Library every Tuesday from 2.00 to 3.00pm, and no bookings are necessary - it's a fun way to keep your brain interested and active, and a good way to make more connections with your local community.

For your convenience, you can pay your rates, which are due by 30 November, at Kumeu Library by Eftpos only. Please note that Libraries no longer accept cash payments for rates and other council services - we continue to accept all major credit and debit cards as well as mobile payments like Apple Pay and Google Pay. You can also pay your rates with cash or Eftpos at a local Post Shop - make sure you take a copy of your rates invoice with its barcode. And you may qualify for a rates rebate - please enquire with our friendly staff.

To keep up with all Kumeu Library's news, events and activities, follow us on Facebook (www.facebook.com/kumeulibrary).



CRAIGWEIL HOUSE
WARMLY INVITES YOU TO...

COME VISIT OUR UNIQUE BOUTIQUE RURAL CARE FACILITY

Situated on the Twin Coast Discovery Highway off State Highway 16 within reach of Muriwai Beach and the Kaipara Coast.

A caring environment nurtured by our dedicated team
Rest Home • Hospital • Secure Dementia • Day Stays

★★★ No Premium Room Charges ★★★

*You're welcome to come in for a cuppa
and see us or ring us today to discuss a
complimentary day stay*

09 420 8277
143 Parkhurst Rd, Parakai
info@craigweil.co.nz

HENRIKWEST
HEALTHCARE



Craigweil House
Home & Hospital
FEEL AT HOME WITH FAMILY

ANYTIME PEST CONTROL

FLIES, ANTS, COCKROACHES, FLEAS

RATS, MICE, SPIDERS, WASPS ETC.

WEEDSPRAYING

KEVIN MORRIS REGISTERED TECHNICIAN

PHONE: 09 411 7400 MOBILE: 027 277 7143



- Warrant of Fitness
- Mechanical repairs, servicing and Auto Electrical for all makes & models
- All the top tyre brands at great prices, tyre fitting, wheel balancing and alignments
- Full range of car batteries available
- Air conditioning services for all vehicles



906 State Highway 16, Waimauku Roundabout
Ph: 09 411 7579

